



Providing **QUALITY** in the  
**WATER** cycle

**Catalogue 2024**

SPANISH



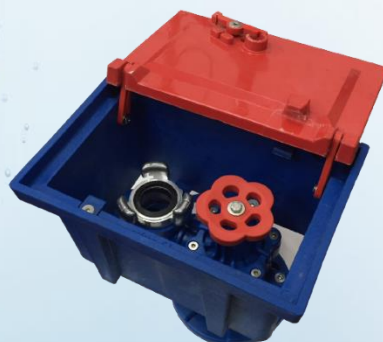
ENGLISH



FRENCH



[www.accysa.com](http://www.accysa.com)  
Tel. +34 93 840 27 36  
[accysa@accysa.com](mailto:accysa@accysa.com)



Accysa offers the highest quality in each of our products and new solutions that facilitate the work of our clients with maximum guarantees and reliability.

From the design to the final product, in each process and manufacturing steps, our values are present to achieve the best product on the market.

- 💧 Dedication
- 💧 Quality
- 💧 Innovation
- 💧 Flexibility
- 💧 Honesty
- 💧 Credibility

## Providing QUALITY in the WATER cycle



*"Integrity and efficiency, flexibility and innovation: these are the ideas that guide our leadership and shape our daily activities"*

Accysa implements quality controls in all manufacturing lines and the best technology on the market.

Laboratories and certifying companies validate our processes and products year after year, guaranteeing that they are always delivered with maximum efficiency and quality.













Productos de Calidad  
Acreditados por laboratorio



Uso de energías renovables



## Our products

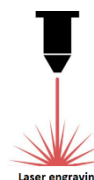
WATER METER BOXES_____	5	
WATER SAMPLING AND ANALYSIS_____	22	
WATER METER BOXES (COMPOSITE ASSEMBLY)_____	24	
WATER METER BOXES (BRASS ASSEMBLY) – SURFACE BOXES_____	35	
IRRIGATION HYDRANTS_____	36	
WATER METERS AND SECURITY SEALS_____	38	
WATER METER VALVES_____	43	
BRONZE VALVES_____	57	
ACCESSORIES AND SIGNALING_____	59	
CANALIZATION_____	63	

# WATER METER BOXES

WITH INTERIOR COMPOSITE ASSEMBLY



### WATER METER BOX – POLYESTER - 25X35 - WITH INTERIOR COMPOSITE ASSEMBLY DN15



- 💧 Meter box with assembly for water meter - DN13, DN15 o DN20
- 💧 Angle inlet ball valve - Composite. Manufactured according to UNE-EN19804
  - With anti-fraud system
  - With connectors for water meter
- 💧 Angle outlet ball valve - Composite. Manufactured according to UNE-EN19804
  - With "check" anti-return system
  - With built-in purge
- 💧 Meter fastening support made of stainless steel. AISI-430
- 💧 Closure assembly using stainless steel latch and Allen format brass shaft
  - Other options available: Triangular, Square, JIS.

DN15	CODE	COUNTER SIZE	PIPE CONNECTION	ANTI-FRAUD ANTI-RETURN	ISULATION	UNIT PRICE	DATA SHEET
THREAD CONNECTION 3/4"	ACM-P014C	3/4" – 3/4"	Thread 3/4"	Yes / Yes	No		
	ACM-P015C	7/8" – 3/4"	Thread 3/4"	Yes / Yes	No		
	ACM-P016C	1" – 1"	Thread 3/4"	Yes / Yes	No		
	ACM-P014PC	3/4" – 3/4"	Thread 3/4"	Yes / Yes	Door		
	ACM-P015PC	7/8" – 3/4"	Thread 3/4"	Yes / Yes	Door		
	ACM-P016PC	1" – 1"	Thread 3/4"	Yes / Yes	Door		
	ACM-P014TC	3/4" – 3/4"	Thread 3/4"	Yes / Yes	Whole		
	ACM-P015TC	7/8" – 3/4"	Thread 3/4"	Yes / Yes	Whole		
	ACM-P016TC	1" – 1"	Thread 3/4"	Yes / Yes	Whole		

- 💧 Optional box window +6 € on gross price
- 💧 Optional water meter (not included)

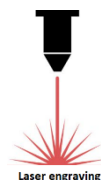
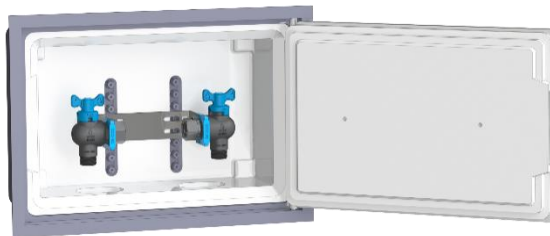
### WATER METER BOX – POLYESTER - 25X35 - WITH INTERIOR COMPOSITE ASSEMBLY DN20

DN20	CODE	COUNTER SIZE	PIPE CONNECTION	ANTI-FRAUD ANTI-RETURN	ISULATION	UNIT PRICE	DATA SHEET
THREAD CONNECTION 3/4"	ACM-P019C	3/4" – 3/4"	Thread 3/4"	Yes / Yes	No		
	ACM-P020C	7/8" – 3/4"	Thread 3/4"	Yes / Yes	No		
	ACM-P021C	1" – 1"	Thread 3/4"	Yes / Yes	No		
	ACM-P019PC	3/4" – 3/4"	Thread 3/4"	Yes / Yes	Door		
	ACM-P020PC	7/8" – 3/4"	Thread 3/4"	Yes / Yes	Door		
	ACM-P021PC	1" – 1"	Thread 3/4"	Yes / Yes	Door		
	ACM-P019TC	3/4" – 3/4"	Thread 3/4"	Yes / Yes	Whole		
	ACM-P020TC	7/8" – 3/4"	Thread 3/4"	Yes / Yes	Whole		
	ACM-P021TC	1" – 1"	Thread 3/4"	Yes / Yes	Whole		

- 💧 Optional box window +6 € on gross price
- 💧 Optional water meter (not included)



## WATER METER BOX - POLYESTER - 30X45 - WITH INTERIOR COMPOSITE ASSEMBLY DN15



- ⦿ Meter box with assembly for water meter - DN13, DN15 o DN20
- ⦿ Angle inlet ball valve - Composite. Manufactured according to UNE-EN19804
  - With anti-fraud system
  - With connectors for water meter
- ⦿ Angle outlet ball valve - Composite. Manufactured according to UNE-EN19804
  - With "check valve" none-return system
  - With built-in purge
- ⦿ Meter fastening support made of stainless steel. AISI-430
- ⦿ Closure assembly using stainless steel latch and Allen format brass shaft
  - Other options available: Triangular, Square, JIS.

DN15	CODE	COUNTER SIZE	PIPE CONNECTION	ANTI-FRAUD ANTI-RETURN	ISULATION	UNIT PRICE	DATA SHEET
THREAD CONNECTION 3/4"	ACM014C	3/4" - 3/4"	Thread 3/4"	Yes / Yes	No		
	ACM015C	7/8" - 3/4"	Thread 3/4"	Yes / Yes	No		
	ACM016C	1" - 1"	Thread 3/4"	Yes / Yes	No		
	ACM014PC	3/4" - 3/4"	Thread 3/4"	Yes / Yes	Door		
	ACM015PC	7/8" - 3/4"	Thread 3/4"	Yes / Yes	Door		
	ACM016PC	1" - 1"	Thread 3/4"	Yes / Yes	Door		
	ACM014TC	3/4" - 3/4"	Thread 3/4"	Yes / Yes	Whole		
	ACM015TC	7/8" - 3/4"	Thread 3/4"	Yes / Yes	Whole		
	ACM016TC	1" - 1"	Thread 3/4"	Yes / Yes	Whole		

- ⦿ Optional box window +6 € on gross price
- ⦿ Optional water meter (not included)

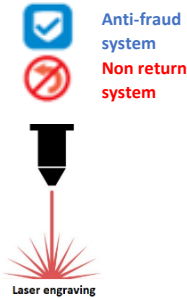
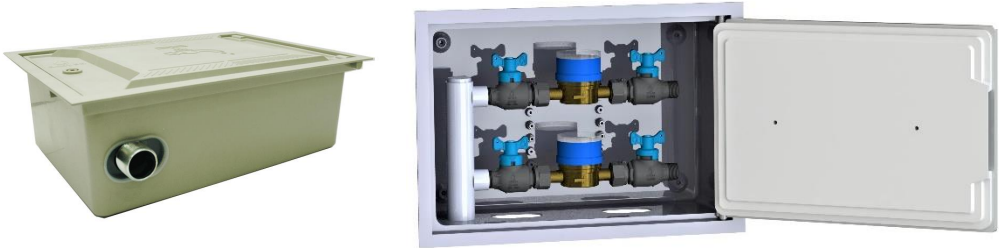
## WATER METER BOX - POLYESTER - 30X45 - WITH INTERIOR COMPOSITE ASSEMBLY DN20

DN20	CODE	COUNTER SIZE	PIPE CONNECTION	ANTI-FRAUD ANTI-RETURN	ISULATION	UNIT PRICE	DATA SHEET
THREAD CONNECTION 3/4"	ACM019C	3/4" - 3/4"	Thread 3/4"	Yes / Yes	No		
	ACM020C	7/8" - 3/4"	Thread 3/4"	Yes / Yes	No		
	ACM021C	1" - 1"	Thread 3/4"	Yes / Yes	No		
	ACM019PC	3/4" - 3/4"	Thread 3/4"	Yes / Yes	Door		
	ACM020PC	7/8" - 3/4"	Thread 3/4"	Yes / Yes	Door		
	ACM021PC	1" - 1"	Thread 3/4"	Yes / Yes	Door		
	ACM019TC	3/4" - 3/4"	Thread 3/4"	Yes / Yes	Whole		
	ACM020TC	7/8" - 3/4"	Thread 3/4"	Yes / Yes	Whole		
	ACM021TC	1" - 1"	Thread 3/4"	Yes / Yes	Whole		

- ⦿ Optional box window +6 € on gross price
- ⦿ Optional water meter (not included)



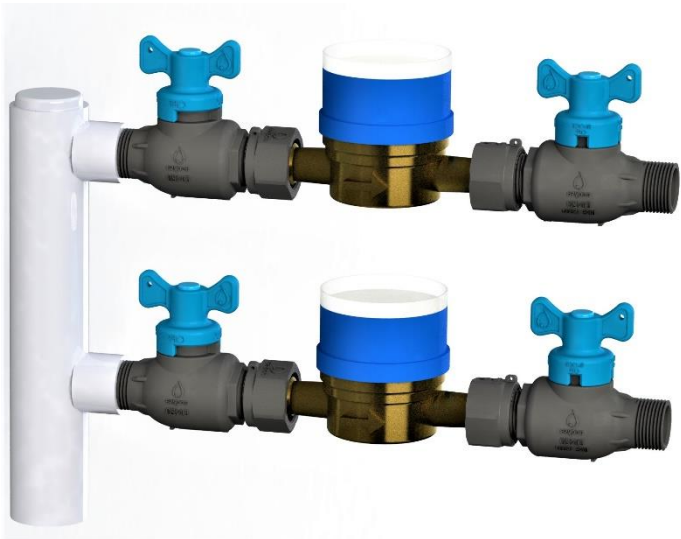
WATER METER BOX - POLYESTER – 30X45 – WITH INTERIOR COMPOSITE ASSEMBLY FOR TWO WATER METERS



- ⦿ Meter box with assembly for two water meters - DN13, DN15 o DN20
- ⦿ Straight inlet ball valve - Composite. Manufactured according to UNE-EN19804
  - With anti-fraud system
  - With water meter connectors
- ⦿ Straight outlet ball valve. Manufactured according to UNE-EN19804
  - With "check valve" none-return system
  - With built-in purge
- ⦿ Galvanized steel manifold with 1 ¼" threaded outlet
- ⦿ Closure assembly with stainless steel latch and Allen format brass shaft
  - Other options available: Triangular, Square, JIS.

THREAD CONNECTION ¾"	CODE	COUNTER SIZE	COLLECTOR CONNECTION	PIPE CONNECTION	ANTI-FRAUD ANTI-RETURN	ISULATION	UNIT PRICE	DATA SHEET
	ACM039C	¾" – ¾"	Thread 1 ¼"	Thread ¾"	Yes/Yes	No		
	ACM040C	7/8" – ¾"	Thread 1 ¼"	Thread ¾"	Yes/Yes	No		
	ACM041C	1" – 1"	Thread 1 ¼"	Thread ¾"	Yes/Yes	No		
	ACM039PC	¾" – ¾"	Thread 1 ¼"	Thread ¾"	Yes/Yes	Door		
	ACM040PC	7/8" – ¾"	Thread 1 ¼"	Thread ¾"	Yes/Yes	Door		
	ACM041PC	1" – 1"	Thread 1 ¼"	Thread ¾"	Yes/Yes	Door		

- ⦿ Optional water meter (not included)

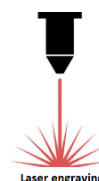


# WATER METER BOXES


WITH INTERIOR BRASS ASSEMBLY




## WATER METER BOX – POLYESTER / FIBERGLASS - EMPTY



- ⦿ Made in polyester reinforced with fiberglass
- ⦿ Door supplied with WATER TAP pictogram
- ⦿ Custom logo marking on demand
- ⦿ Thermal insulation of expanded polystyrene (on door or complete cabinet)

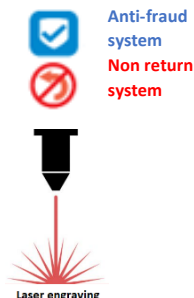
CODE	MEASURES	LOCK	ISULATION	UNIT PRICE	DATA SHEET
APG2535	250x350	Allen	-		
APG2536	250x350	Triangular	-		
APG2537	250x350	Square	-		
APG2538	250x350	JIS	-		
APG2535P	250x350	Allen	Door		
APG2536P	250x350	Triangular	Door		
APG2537P	250x350	Square	Door		
APG2538P	250x350	JIS	Door		
APG2535T	250x350	Allen	Whole		
APG2536T	250x350	Triangular	Whole		
APG2537T	250x350	Square	Whole		
APG2538T	250x350	JIS	Whole		
APG2535V	250x350	Allen	-		
APG2536V	250X350	Triangular	-		

CODE	MEASURES	LOCK	ISULATION	UNIT PRICE	DATA SHEET
APG3045	300x450	Allen	-		
APG3046	300x450	Triangular	-		
APG3047	300x450	Square	-		
APG3048	300x450	JIS	-		
APG3045P	300x450	Allen	Door		
APG3046P	300x450	Triangular	Door		
APG3047P	300x450	Square	Door		
APG3049P	300x450	JIS	Door		
APG3045T	300x450	Allen	Whole		
APG3046T	300x450	Triangular	Whole		
APG3047T	300x450	Square	Whole		
APG3048T	300x450	JIS	Whole		
APG3045V	300x450 (WINDOW)	Allen	-		
APG3046V	300x450 (WINDOW)	Triangular	-		

CODE	MEASURES	DOOR	LOCK	UNIT PRICE	DATA SHEET
APG5353	530x530	1	Triangular		
APG5370	530x700	1	Triangular		
APG5370AM	530x700	1	Square		
APG500100AM	500x100	2	Square		
APG750125AM	750x1250	2	Square		



## WATER METER BOX - POLYESTER - 25X35 - WITH INTERIOR BRASS ASSEMBLY



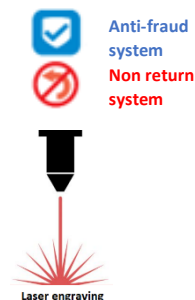
- ⚡ Meter box with interior brass assembly: DN13, DN15 o DN20
- ⚡ Angle inlet ball valve - Brass CW617N. Manufactured according to UNE-EN19804
  - With anti-fraud system
  - With water meter connectors
- ⚡ Angle outlet ball valve - Brass CW617N. Manufactured according to UNE-EN19804
  - With "check valve" none-return system
  - With built-in purge
- ⚡ Water meter holding support made of stainless steel: AISI3014
- ⚡ Closure assembly with stainless steel latch and Allen format brass shaft
  - Other options available: Triangular, Square, JIS.

	CODE	METER MEASURES	PIPE CONNECTION	ANTI-FRAUD ANTI-RETURN	ISULATION	UNIT PRICE	DATA SHEET
Connection Thread ¾"	ACM-P019	¾" – ¾"	Thread ¾"	Yes/Yes	No		
	ACM-P020	7/8" – ¾"	Thread ¾"	Yes/Yes	No		
	ACM-P021	1" – 1"	Thread ¾"	Yes/Yes	No		
	ACM-P019P	¾" – ¾"	Thread ¾"	Yes/Yes	DOOR		
	ACM-P020P	7/8" – ¾"	Thread ¾"	Yes/Yes	DOOR		
	ACM-P021P	1" – 1"	Thread ¾"	Yes/Yes	DOOR		
	ACM-P019T	¾" – ¾"	Thread ¾"	Yes/Yes	WHOLE		
	ACM-P020T	7/8" – ¾"	Thread ¾"	Yes/Yes	WHOLE		
	ACM-P021T	1" – 1"	Thread ¾"	Yes/Yes	WHOLE		
Connection PE-25	ACM-P007	¾" – ¾"	PE-25	Yes/Yes	No		
	ACM-P009	7/8" – ¾"	PE-25	Yes/Yes	No		
	ACM-P011	1" – 1"	PE-25	Yes/Yes	No		
	ACM-P007P	¾" – ¾"	PE-25	Yes/Yes	DOOR		
	ACM-P009P	7/8" – ¾"	PE-25	Yes/Yes	DOOR		
	ACM-P011P	1" – 1"	PE-25	Yes/Yes	DOOR		
	ACM-P007T	¾" – ¾"	PE-25	Yes/Yes	WHOLE		
	ACM-P009T	7/8" – ¾"	PE-25	Yes/Yes	WHOLE		
	ACM-P011T	1" – 1"	PE-25	Yes/Yes	WHOLE		
Connection PE-32	ACM-P008	¾" – ¾"	PE-32	Yes/Yes	No		
	ACM-P010	7/8" – ¾"	PE-32	Yes/Yes	No		
	ACM-P012	1" – 1"	PE-32	Yes/Yes	No		
	ACM-P008P	¾" – ¾"	PE-32	Yes/Yes	DOOR		
	ACM-P010P	7/8" – ¾"	PE-32	Yes/Yes	DOOR		
	ACM-P012P	1" – 1"	PE-32	Yes/Yes	DOOR		
	ACM-P008T	¾" – ¾"	PE-32	Yes/Yes	WHOLE		
	ACM-P010T	7/8" – ¾"	PE-32	Yes/Yes	WHOLE		
	ACM-P012T	1" – 1"	PE-32	Yes/Yes	WHOLE		



- ⚡ Optional box window +6 € on gross price
- ⚡ Optional water meter (not included)

## WATER METER BOX - POLYESTER - 30 x 45 - WITH INTERIOR BRASS ASSEMBLY



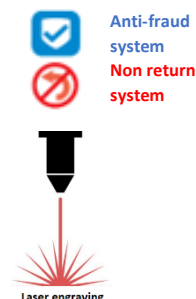
- ⦿ Meter box with interior brass assembly: DN13, DN15 o DN20
- ⦿ Angle inlet ball valve - Brass CW617N. Manufactured according to UNE-EN19804
  - With anti-fraud system
  - With water meter connectors
- ⦿ Angle outlet ball valve - Brass CW617N. Manufactured according to UNE-EN19804
  - With "check valve" none-return system
  - With built-in purge
- ⦿ Water meter holding support made of stainless steel: AISI3014
- ⦿ Closure assembly with stainless steel latch and Allen format brass shaft
  - Other options available: Triangular, Square, JIS.

	CODE	METER MEASURES	PIPE CONNECTION	ANTI-FRAUD ANTI-RETURN	ISULATION	UNIT PRICE	DATA SHEET
Connection Thread 3/4"	ACM019	3/4" - 3/4"	Thread 3/4"	Yes/Yes	No		
	ACM020	7/8" - 3/4"	Thread 3/4"	Yes/Yes	No		
	ACM021	1" - 1"	Thread 3/4"	Yes/Yes	No		
	ACM019P	3/4" - 3/4"	Thread 3/4"	Yes/Yes	DOOR		
	ACM020P	7/8" - 3/4"	Thread 3/4"	Yes/Yes	DOOR		
	ACM021P	1" - 1"	Thread 3/4"	Yes/Yes	DOOR		
	ACM019T	3/4" - 3/4"	Thread 3/4"	Yes/Yes	WHOLE		
	ACM020T	7/8" - 3/4"	Thread 3/4"	Yes/Yes	WHOLE		
	ACM021T	1" - 1"	Thread 3/4"	Yes/Yes	WHOLE		
Connection PE-25	ACM007	3/4" - 3/4"	PE-25	Yes/Yes	No		
	ACM009	7/8" - 3/4"	PE-25	Yes/Yes	No		
	ACM011	1" - 1"	PE-25	Yes/Yes	No		
	ACM007P	3/4" - 3/4"	PE-25	Yes/Yes	DOOR		
	ACM009P	7/8" - 3/4"	PE-25	Yes/Yes	DOOR		
	ACM011P	1" - 1"	PE-25	Yes/Yes	DOOR		
	ACM007T	3/4" - 3/4"	PE-25	Yes/Yes	WHOLE		
	ACM009T	7/8" - 3/4"	PE-25	Yes/Yes	WHOLE		
	ACM011T	1" - 1"	PE-25	Yes/Yes	WHOLE		
Connection PE-32	ACM008	3/4" - 3/4"	PE-32	Yes/Yes	No		
	ACM010	7/8" - 3/4"	PE-32	Yes/Yes	No		
	ACM012	1" - 1"	PE-32	Yes/Yes	No		
	ACM008P	3/4" - 3/4"	PE-32	Yes/Yes	DOOR		
	ACM010P	7/8" - 3/4"	PE-32	Yes/Yes	DOOR		
	ACM012P	1" - 1"	PE-32	Yes/Yes	DOOR		
	ACM008T	3/4" - 3/4"	PE-32	Yes/Yes	WHOLE		
	ACM010T	7/8" - 3/4"	PE-32	Yes/Yes	WHOLE		
	ACM012T	1" - 1"	PE-32	Yes/Yes	WHOLE		



- ⦿ Optional box window +6 € on gross price
- ⦿ Optional water meter (not included)

## WATER METER BOX - POLYESTER - 30 x 45 - WITH INTERIOR BRASS ASSEMBLY FOR TWO WATER METERS



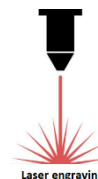
- ⌚ Meter box with assembly for two water meters: DN13, DN15 o DN20
- ⌚ Straight inlet ball valve - Brass CW617N. Manufactured according to UNE-EN19804
  - With anti-fraud system
  - With water meter connectors
- ⌚ Straight outlet ball valve - Brass CW617N. Manufactured according to UNE-EN19804
  - With "check valve" none-return system
  - With built-in purge
- ⌚ Galvanized steel manifold with threaded outlet 1 1/4"
- ⌚ Closure assembly with stainless steel latch and Allen format brass shaft
  - Other options available: Triangular, Square, JIS.





	CODE	METER MEASURES	MANIFOLD CONNECTION	PIPE CONNECTION	ANTI-FRAUD ANTI-RETURN	ISULATION	UNIT PRICE	DATA SHEET
Connection Thread 3/4"	ACM039	3/4" - 3/4"	Thread M 1 1/4"	Thread 3/4"	Yes/Yes	No		
	ACM040	7/8" - 3/4"	Thread M 1 1/4"	Thread 3/4"	Yes/Yes	No		
	ACM041	1" - 1"	Thread M 1 1/4"	Thread 3/4"	Yes/Yes	No		
	ACM039P	3/4" - 3/4"	Thread M 1 1/4"	Thread 3/4"	Yes/Yes	DOOR		
	ACM040P	7/8" - 3/4"	Thread M 1 1/4"	Thread 3/4"	Yes/Yes	DOOR		
	ACM041P	1" - 1"	Thread M 1 1/4"	Thread 3/4"	Yes/Yes	DOOR		
Connection PE-25	ACM013	3/4" - 3/4"	Thread M 1 1/4"	PE-25	Yes/Yes	No		
	ACM015	7/8" - 3/4"	Thread M 1 1/4"	PE-25	Yes/Yes	No		
	ACM017	1" - 1"	Thread M 1 1/4"	PE-25	Yes/Yes	No		
	ACM013P	3/4" - 3/4"	Thread M 1 1/4"	PE-25	Yes/Yes	DOOR		
	ACM015P	7/8" - 3/4"	Thread M 1 1/4"	PE-25	Yes/Yes	DOOR		
	ACM017P	1" - 1"	Thread M 1 1/4"	PE-25	Yes/Yes	DOOR		
Connection PE-32	ACM014	3/4" - 3/4"	Thread M 1 1/4"	PE-32	Yes/Yes	No		
	ACM016	7/8" - 3/4"	Thread M 1 1/4"	PE-32	Yes/Yes	No		
	ACM018	1" - 1"	Thread M 1 1/4"	PE-32	Yes/Yes	No		
	ACM014P	3/4" - 3/4"	Thread M 1 1/4"	PE-32	Yes/Yes	DOOR		
	ACM016P	7/8" - 3/4"	Thread M 1 1/4"	PE-32	Yes/Yes	DOOR		
	ACM018P	1" - 1"	Thread M 1 1/4"	PE-32	Yes/Yes	DOOR		





- ⌚ Optional box window +6 € on gross price
- ⌚ Optional water meter (not included)

## METER DOORS - POLYESTER REINFORCED WITH FIBERGLASS



-  Fiberglass-reinforced polyester door
-  Door supplied with WATER TAP pictogram
-  Custom logo marking on demand
-  Thermal insulation of expanded polystyrene (optional)

CODE	MEASURES	LOCK	ISULATION	UNITS PER BOX	UNIT PRICE	DATA SHEET
PGP2535	250x350	Allen	-	10		
PGP2536	250x350	Triangular	-	10		
PGP2537	250x350	Square	-	10		
PGP2538	250x350	JIS	-	10		
PGP2535A	250x350	Allen	Yes	6		
PGP2536A	250x350	Triangular	Yes	6		
PGP2537A	250x350	Square	Yes	6		
PGP2538A	250x350	JIS	Yes	6		
PGP2535V	250x350	Allen	-	10		
PGP2536V	250x350	Triangular	-	10		

CODE	MEASURES	LOCK	ISULATION	UNITS PER BOX	UNIT PRICE	DATA SHEET
PGP3045	300x450	Allen	-	10		
PGP3046	300x450	Triangular	-	10		
PGP3047	300x450	Square	-	10		
PGP3048	300x450	JIS	-	10		
PGP3045A	300x450	Allen	Yes	6		
PGP3046A	300x450	Triangular	Yes	6		
PGP3047A	300x450	Square	Yes	6		
PGP3048A	300x450	JIS	Yes	6		
PGP3045V	300x450 (WINDOW)	Allen	-	10		
PGP3046V	300x450 (WINDOW)	Triangular	-	10		

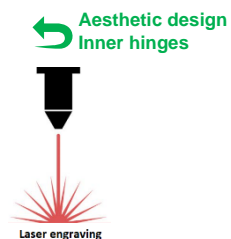
## REPLACEMENT LATCH FOR FIBERGLASS CABINETS AND DOORS

-  Brass and stainless-steel latch for polyester door




CODE	LOCK	UNIT PRICE
CIE-FIB-A	Allen	
CIE-FIB-T7	Triangular 7mm	
CIE-FIB-T9	Triangular 9mm	
CIE-FIB-C	Square	

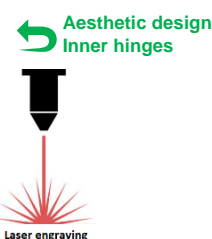
## WATER METER DOORS - METAL



- ⦿ Metallic water meter door made of galvanized steel sheet, with embossed polyester paint finish 70-100 microns thick
- ⦿ WATER TAP pictogram indicating drinking water
- ⦿ Aesthetic design with inner hinges, no visible welds and removable door
- ⦿ Customized lettering and logo marking on request

CODE	MEASURES HEIGHT X WIDTH	LOCK	UNITS PER BOX	UNIT PRICE	DATA SHEET
PCH2535G	250x350	Allen	10		
PCH2536G	250x350	Triangular	10		
PCH2537G	250x350	Square	10		
PCH2538G	250x350	JIS	10		
PCH3045G	300x450	Allen	10		
PCH3046G	300x450	Triangular	10		
PCH3047G	300x450	Square	10		
PCH3048G	300x450	JIS	10		
PCH4040G	400x400	Allen	1		
PCH4041G	400x400	Triangular	1		
PCH4042G	400x400	Square	1		
PCH4043G	400x400	JIS	1		

## METER DOORS - STEEL SHEET



- ⦿ Metal door made of sheet steel with polyester embossed paint finish 70-100 microns thick.
- ⦿ Aesthetic design with inner hinges, no visible welds and removable door
- ⦿ Ventilation grids
- ⦿ Customized lettering and logo marking on request

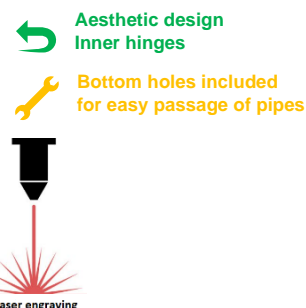
CODE	MEASURES HEIGHT X WIDTH	LOCK	UNITS PER BOX	UNIT PRICE	DATA SHEET
PCH3030	300x300	Allen	1		
PCH3031	300x300	Triangular	1		
PCH3032	300x300	CFE	1		
PCH4030	400x300	Allen	1		
PCH4031	400x300	Triangular	1		
PCH4050	400x500	Allen	1		
PCH4051	400x500	Triangular	1		
PCH4052	400x500	CFE	1		
PCH5040	500x400	Allen	1		
PCH5041	500x400	Triangular	1		
PCH5042	500x400	CFE	1		
PCH5043	500x400	CGE	1		
PCH5060	500x600	Allen	1		
PCH5061	500x600	Triangular	1		
PCH5062	500x600	CFE	1		
PCH5063	500x600	CGE	1		
PCH6050	600x500	Allen	1		
PCH6051	600x500	Triangular	1		
PCH6052	600x500	CFE	1		
PCH6053	600x500	CGE	1		
PCH8080	800x800	Allen	1		
PCH8081	800x800	Triangular	1		
PCH8082	800x800	CFE	1		
PCH8083	800x800	CGE	1		
PCH9050	900x500	Allen	1		
PCH9051	900x500	Triangular	1		
PCH9052	900x500	CFE	1		
PCH9053	900x500	CGE	1		
PCH12050	1200x500	Allen	1		
PCH12051	1200x500	Triangular	1		
PCH12052	1200x500	CFE	1		
PCH12053	1200x500	CGE	1		




CODE	MEASURES	LOCK	APPROVALS	UNIT PRICE	DATA SHEET
PCH5064	500x600	SGAB	AGBAR		
PCH5094	500x900	SGAB	AGBAR		




## SHEET STEEL BOX



- ⦿ Meter box made of sheet steel with embossed polyester paint finish 70-100 microns thick
- ⦿ Aesthetic design with inner hinges, no visible welds and removable door
- ⦿ Bottom holes included for easy passage of pipes
- ⦿ Ventilation grids
- ⦿ Customized lettering and logo marking on request
- ⦿ Optional: Indoor installation for one, two or three water meters

CODE	MEASURES HEIGHT X WIDTH	LOCK	UNITS PER BOX	UNIT PRICE	DATA SHEET
ACH5040	500x400	Allen	1		
ACH5041	500x400	Triangular	1		
ACH5042	500x400	JIS CFE	1		
ACH5043	500x400	JIS CGE	1		
ACH5060	500x600	Allen	1		
ACH5061	500x600	Triangular	1		
ACH5063	500x600	JIS CFE	1		
ACH5064	500x600	JIS CGE	1		

CODE	MEASURES HEIGHT X WIDTH	LOCK	UNITS PER BOX	UNIT PRICE	DATA SHEET
ACH5062	500x600	SGAB	1		

## REPLACEMENT LATCH FOR STEEL SHEET CABINETS AND DOORS




- ⦿ Zinc-plated latch for sheet metal door

CODE	LOCK	UNIT PRICE
CIE-CH-A	Allen	
CIE-CH-T7	Triangular 7mm	
CIE-CH-T9	Triangular 9mm	
CIE-CH-C	Square	
CIE-CH-SGAB	SGAB	

### WATER METER DOORS MODEL: "CANAL ISABEL II".

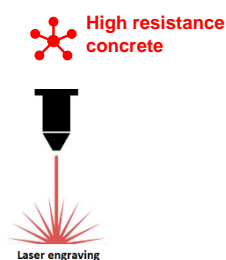


- Water meter door made of galvanized steel sheet, with polyester paint finish (RAL 9010)
- Slide lock and external hinges
- Models A1, A2, A3 with insulation and galvanized steel back protection plate
- Standard Logo: Canal de Isabel II
- Customized lettering and logo marking on request


CODE	FRAME MEASURES HEIGHT X WIDTH	DOOR MEASURES HEIGHT X WIDTH	ISULATION	DOORS	LOCK	UNIT PRICE	DATA SHEET
PCH-A1	460x460	370x370	Si	1	Square		
PCH-A2	610x680	520x590	Si	1	Square		
PCH-A3	850x850	770x385(X2)	Si	2	Square		
PCH10018-CYII	1090x1890	1000x900(X2)	No	2	Square		

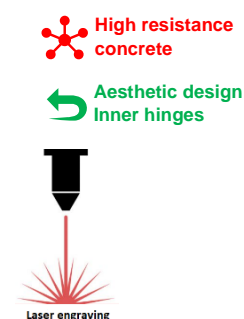
## WATER METER BOX - CONCRETE - WITHOUT ASSEMBLY

- Water meter box made of concrete reinforced with fiberglass, offering high impact resistance
- Completely open base for easy placement of inlet and outlet pipes to the meter or other mechanisms




- Lock: stainless steel latch and brass Allen shaft
  - Other options available: Triangular, Square, JIS

CODE	DOOR MEASURES	BOX MEASURES	HOUSING	ISULATION	LOCK	UNITS PER PALLET	PRICE	DATA SHEET
AHP2535	250 x 350	750x440x220	Door	-	Allen	8		
AHP2535A	250 x 350	750x440x220	Door	Door	Allen	8		
AHCP2535	250 x 350	750x440x220	Cabinet	-	Allen	8		
AHCP2535A	250 x 350	750x440x220	Cabinet	Door	Allen	8		
AHCP2535T	250 x 350	750x440x220	Cabinet	Whole	Allen	8		
AHP3045	300 x 450	750x560x220	Door	-	Allen	8		
AHP3045A	300 x 450	750x560x220	Door	Door	Allen	8		
AHCP3045	300 x 450	750x560x220	Cabinet	-	Allen	8		
AHCP3045A	300 x 450	750x560x220	Cabinet	Door	Allen	8		
AHCP3045T	300 x 450	750x560x220	Cabinet	Whole	Allen	8		



- Steel door with embossed paint finish, interior hinges and concealed welds
- Customized logo marking on request
- Locking assembly of stainless-steel latch and brass Allen shaft
  - Other options available: Triangular, Square, JIS


CODE	DOOR MEASURES	CABINET MEASURES	DOOR TYPE	LOCK	UNITS PER PALLET	PRICE	DATA SHEET
AHP4040	400 x 400	750x510x260	Steel sheet door	Allen	6		
AHP5060	500 x 600	850x680x330	Steel sheet door	Allen	3		
AHP5064	500 x 600	850x680x330	Steel sheet door	SGAB	3		

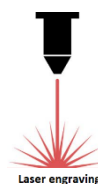
## WATER METER BOX – CONCRETE - WITH INTERNAL ASSEMBLY - HOUSING BOX: 25X35



 Sistema Antifraude

 Sistema Antirretorno

 High resistance concrete



- ⦿ Meter box made of concrete reinforced with fiberglass, offering high impact resistance
- ⦿ Completely open base for easy placement of inlet and outlet pipes to the meter or other mechanisms
- ⦿ 25x35 box prepared for inlet and outlet of pipes, with mounting for water meter DN13, DN15 or DN20
- ⦿ Inlet angle ball valve - Brass CW617N. Manufactured in accordance with UNE-EN19804
  - With anti-fraud system – Meter connectors included
- ⦿ Outlet angle ball valve - Brass CW617N. Manufactured in accordance with UNE-EN19804
  - With “check valve” none-return system
  - With built-in purge
- ⦿ Water meter support made of stainless steel: AISI3014
  - Locking assembly of stainless steel latch and brass Allen shaft
  - Other options available: Triangular, Square, JIS

	CODE	METER MEASURES	PIPE CONNECTION	ANTI-FRAUD ANTI-RETURN	ISULATION	UNIT PRICE	DATA SHEET
Connection Thread ¾"	AHPM-P019	¾" – ¾"	Thread ¾"	Yes/Yes	No		
	AHPM-P020	7/8" – ¾"	Thread ¾"	Yes/Yes	No		
	AHPM-P021	1" – 1"	Thread ¾"	Yes/Yes	No		
	AHPM-P019P	¾" – ¾"	Thread ¾"	Yes/Yes	DOOR		
	AHPM-P020P	7/8" – ¾"	Thread ¾"	Yes/Yes	DOOR		
	AHPM-P021P	1" – 1"	Thread ¾"	Yes/Yes	DOOR		
	AHPM-P019T	¾" – ¾"	Thread ¾"	Yes/Yes	WHOLE		
	AHPM-P020T	7/8" – ¾"	Thread ¾"	Yes/Yes	WHOLE		
	AHPM-P021T	1" – 1"	Thread ¾"	Yes/Yes	WHOLE		
Connection PE-25	AHPM-P007	¾" – ¾"	PE-25	Yes/Yes	No		
	AHPM-P009	7/8" – ¾"	PE-25	Yes/Yes	No		
	AHPM-P011	1" – 1"	PE-25	Yes/Yes	No		
	AHPM-P007P	¾" – ¾"	PE-25	Yes/Yes	DOOR		
	AHPM-P009P	7/8" – ¾"	PE-25	Yes/Yes	DOOR		
	AHPM-P011P	1" – 1"	PE-25	Yes/Yes	DOOR		
	AHPM-P007T	¾" – ¾"	PE-25	Yes/Yes	WHOLE		
	AHPM-P009T	7/8" – ¾"	PE-25	Yes/Yes	WHOLE		
	AHPM-P011T	1" – 1"	PE-25	Yes/Yes	WHOLE		
Connection PE-32	AHPM-P008	¾" – ¾"	PE-32	Yes/Yes	No		
	AHPM-P010	7/8" – ¾"	PE-32	Yes/Yes	No		
	AHPM-P012	1" – 1"	PE-32	Yes/Yes	No		
	AHPM-P008P	¾" – ¾"	PE-32	Yes/Yes	DOOR		
	AHPM-P010P	7/8" – ¾"	PE-32	Yes/Yes	DOOR		
	AHPM-P012P	1" – 1"	PE-32	Yes/Yes	DOOR		
	AHPM-P008T	¾" – ¾"	PE-32	Yes/Yes	WHOLE		
	AHPM-P010T	7/8" – ¾"	PE-32	Yes/Yes	WHOLE		
	AHPM-P012T	1" – 1"	PE-32	Yes/Yes	WHOLE		



- ⦿ Optional water meter (not included)

## WATER METER BOX - CONCRETE - WITH INTERNAL ASSEMBLY - HOUSING BOX: 30X45



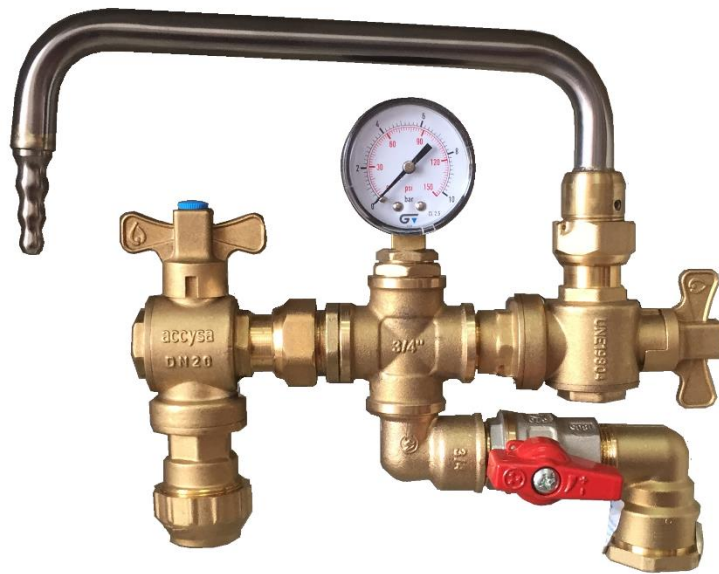
- ⦿ Meter box made of concrete reinforced with fiberglass, offering high impact resistance
- ⦿ Completely open base for easy placement of inlet and outlet pipes to the meter or other mechanisms
- ⦿ 30 X 45 box prepared for inlet and outlet of pipes, with mounting for water meter DN13, DN15 or DN20
- ⦿ Inlet angle ball valve - Brass CW617N. Manufactured in accordance with UNE-EN19804
  - With anti-fraud system – Meter connectors included
- ⦿ Outlet angle ball valve - Brass CW617N. Manufactured in accordance with UNE-EN19804
  - With “check” anti-return system and built-in purge
- ⦿ Water meter support made of stainless steel: AISI3014
- ⦿ Lock assembly of stainless-steel latch and brass Allen shaft
  - Other options available: Triangular, Square, JIS

	CODE	METER MEASURES	PIPE CONNECTION	ANTI-FRAUD ANTI-RETURN	ISULATION	UNIT PRICE	DATA SHEET
Connection Thread ¾"	AHPM-019	¾" – ¾"	Thread ¾"	Yes/Yes	No		
	AHPM-020	7/8" – ¾"	Thread ¾"	Yes/Yes	No		
	AHPM-021	1" – 1"	Thread ¾"	Yes/Yes	No		
	AHPM-019P	¾" – ¾"	Thread ¾"	Yes/Yes	DOOR		
	AHPM-020P	7/8" – ¾"	Thread ¾"	Yes/Yes	DOOR		
	AHPM-021P	1" – 1"	Thread ¾"	Yes/Yes	DOOR		
	AHPM-019T	¾" – ¾"	Thread ¾"	Yes/Yes	WHOLE		
	AHPM-020T	7/8" – ¾"	Thread ¾"	Yes/Yes	WHOLE		
	AHPM-021T	1" – 1"	Thread ¾"	Yes/Yes	WHOLE		
Connection PE-25	AHPM-007	¾" – ¾"	PE-25	Yes/Yes	No		
	AHPM-009	7/8" – ¾"	PE-25	Yes/Yes	No		
	AHPM-011	1" – 1"	PE-25	Yes/Yes	No		
	AHPM-007P	¾" – ¾"	PE-25	Yes/Yes	DOOR		
	AHPM-009P	7/8" – ¾"	PE-25	Yes/Yes	DOOR		
	AHPM-011P	1" – 1"	PE-25	Yes/Yes	DOOR		
	AHPM-007T	¾" – ¾"	PE-25	Yes/Yes	WHOLE		
	AHPM-009T	7/8" – ¾"	PE-25	Yes/Yes	WHOLE		
	AHPM-011T	1" – 1"	PE-25	Yes/Yes	WHOLE		
Connection PE-32	AHPM-008	¾" – ¾"	PE-32	Yes/Yes	No		
	AHPM-010	7/8" – ¾"	PE-32	Yes/Yes	No		
	AHPM-012	1" – 1"	PE-32	Yes/Yes	No		
	AHPM-008P	¾" – ¾"	PE-32	Yes/Yes	DOOR		
	AHPM-010P	7/8" – ¾"	PE-32	Yes/Yes	DOOR		
	AHPM-012P	1" – 1"	PE-32	Yes/Yes	DOOR		
	AHPM-008T	¾" – ¾"	PE-32	Yes/Yes	WHOLE		
	AHPM-010T	7/8" – ¾"	PE-32	Yes/Yes	WHOLE		
	AHPM-012T	1" – 1"	PE-32	Yes/Yes	WHOLE		



- ⦿ Optional water meter (not included)

# WATER SAMPLING AND ANALYSIS




## WATER SAMPLING AND ANALYSIS

- System designed for the correct sampling and analysis of drinking water by a water company, health or environmental authority
- Angle inlet valve DN20, anti-fraud system. Pressure gauge
- Tap in AISI 304 stainless steel, which can be sterilized by flaming method
- Purge valve with rotating polished brass tap or PE-25 connection to couple any element

### KIT




CODE	INLET	PURGE	ANTI-FRAUD	PRESSURE GAUGE	PRICE	DATA SHEET
KCM00AA	PE-25	TAP	Yes	Included		
KCM00AAB	PE-25	PE-25	Yes	Included		

### KIT WITH BOX ASSEMBLY



Anti-fraud system

- Analysis kit mounted in a polyester box
- WRITTEN ON THE DOOR: "Sampling point". Other letterings on request

CODE	INLET	PURGE	ANTI-FRAUD	PRESSURE GAUGE	BOX MEASURES	PRICE	DATA SHEET
ACM00AA	PE-25	TAP	Yes	Included	300 x 450 Allen		
ACM00AAB	PE-25	PE-25	Yes	Included	300 x 450 Allen		

### KIT WITH CONCRETE BOX ASSEMBLY




Anti-fraud system



High resistance concrete

- Analysis kit mounted in a high-resistance concrete box. Ready for pipe connection
- WRITTEN ON THE DOOR: "Sampling point". Other letterings on request

CODE	INLET	PURGE	ANTI-FRAUD	PRESSURE GAUGE	BOX MEASURES	PRICE	DATA SHEET
AHPCPM00AA	PE-25	TAP	Yes	Included	300 x 450 Allen		
AHPCPM00AAB	PE-25	PE-25	Yes	Included	300 x 450 Allen		

## WATER METER BOXES WITH INTERIOR COMPOSITE ASSEMBLY



### WATER METER BOX – HDPE - [ DN13 - DN15 - DN20 ] - INLET VALVE

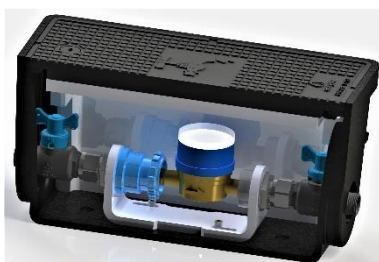


- ⌚ Meter box made of fiberglass reinforced HDPE
- ⌚ Cover made of high resistance composite according to UNE-EN B-125
- ⌚ Complete internal insulation made of expanded polystyrene
- ⌚ ¾" Connections
- ⌚ Composite straight ball valve (inlet and outlet). Manufactured according to UNE-EN19804
- ⌚ Composite expansion set
- ⌚ With anti-fraud system, with "check valve" none-return system, bracket and expansion set for easy installation of any meter - DN13 - DN15 - DN20

CODE	MEASURES	ISULATION	METER SIZE	CONNECTIONS	PRICE	DATA SHEET
RCF2519M1C	290 x 200 x 210	Yes	13-15-20	RM ¾" – RM ¾"		

- ⌚ Optional water meter (not included)

### WATER METER BOX – HDPE - [ DN13 - DN15 - DN20 ] - INLET AND OUTLET VALVE



- ⌚ Meter box made of HDPE reinforced with fiberglass
- ⌚ Cover made of high resistance composite according to UNE-EN B-125
- ⌚ Complete internal insulation made of expanded polystyrene
- ⌚ ¾" Connections
- ⌚ Straight inlet and outlet ball valves made in composite. Manufactured according to UNE-EN19804
- ⌚ Composite expansion set
- ⌚ With anti-fraud system, check valve, support and expansion set for easy installation of any meter – DN13 – DN15 – DN20

CODE	MEASURES	ISULATION	METER SIZE	CONNECTIONS	PRICE	DATA SHEET
RCF4025S1C	400 x 215 x 220	Yes	13-15-20	RH ¾" – RH ¾"		

- ⌚ Optional water meter (not included)

### WATER METER BOX – HDPE - [ DN13 - DN15 - DN20 ] - RADIO SYSTEM COMPATIBLE



Certificado para  
AGUA POTABLE



Anti-fraud  
system



Non return  
system



Meters with radio  
module compatible



- ⚡ Meter box made of HDPE reinforced with fiberglass
- ⚡ Cover made of high resistance composite according to UNE-EN B-125
- ⚡ Complete internal insulation made of expanded polystyrene
- ⚡ ¾" Connections
- ⚡ Straight inlet and outlet ball valves made in composite. Manufactured according to UNE-EN19804
- ⚡ Composite expansion set
- ⚡ With anti-fraud system, "check valve" none-return system. Support and expansion set for easy installation of any meter: DN13 – DN15 – DN20. Compatible with water meters with radio module

CODE	MEASURES	ISULATION	METER SIZE	CONNECTIONS	PRICE	DATA SHEET
RCF4022S1C	400 x 215 x 285	Yes	13-15-20	RH ¾" – RH ¾"		

- ⚡ Optional water meter (not included)


# WATER METER BOXES SURFACE BOXES



## SURFACE BOX - HDPE - WITH SHUT-OFF VALVE




- 🔗 Surface box made in HDPE reinforced with fibreglass with anti-fraud shut-off valve
- 🔗 Cover made of high-strength composite according to UNE-EN B-125
- 🔗 Lock made of polyethylene and stainless steel latch
- 🔗 Connections: ¾" – 1" – PE25 – PE32
- 🔗 Straight inlet ball valve – Brass CW617N. Manufactured according to UNE-EN19804
  - With anti-fraud system, expansion and support assembly

CODE	HEIGHT	LENGTH	WIDTH	CONNECTIONS	PRICE	DATA SHEET
RCF1515	150	150	150	Empty		
RCF1515S1	150	150	150	RM ¾" – RM ¾"		
RCF1515S	150	150	150	PE25 – PE25		
RCF1515S2	150	150	150	PE32 – PE32		
RCF1515S3	150	150	150	RM 1" – RM 1"		

## WATER METER BOX - [ DN13 - DN15 - DN20 ] – INLET VALVE



- 🔗 Meter box - HDPE reinforced with fibreglass
- 🔗 Cover made of high-strength composite according to UNE-EN B-125
- 🔗 Complete internal insulation made of expanded polystyrene
- 🔗 Connections: ¾" – 1" – PE25 – PE32
- 🔗 Straight inlet ball valve - Brass CW617N. Manufactured according to UNE-EN19804
- 🔗 With anti-fraud system, "check" none-return system, support and expansion set for easy installation of any meter – DN13 – DN15 – DN20


CODE	MEASURES	ISULATION	METER SIZE	CONNECTIONS	PRICE	DATA SHEET
RCF2519	290 x 200 x 210	Yes	Empty	Empty		
RCF2519M1	290 x 200 x 210	Yes	13-15-20	RM ¾" – RM ¾"		
RCF2519M2	290 x 200 x 210	Yes	13-15-20	PE25 – PE25		
RCF2519M3	290 x 200 x 210	Yes	13-15-20	PE32 – PE32		

- 🔗 Optional water meter (not included)

## WATER METER BOX - HDPE [ DN13 - DN15 - DN20 ] - INLET- OUTLET VALVES



- ⚙ Meter box - HDPE reinforced with fiberglass
- ⚙ Cover made of high-strength composite according to UNE-EN B-125
- ⚙ Complete internal insulation made of expanded polystyrene
- ⚙ Connections: ¾" – 1" – PE25 – PE32
- ⚙ Straight inlet and outlet ball valves - Brass CW617N. Manufactured according to UNE-EN19804
- ⚙ With anti-fraud system, "check" none-return system, support and expansion set for easy installation of any meter: DN13 – DN15 – DN20


CODE	MEASURES	ISULATION	METER SIZE	CONNECTIONS	PRICE	DATA SHEET
RCF4021	400 x 215 x 220	Yes	Empty	Empty		
RCF4025S1	400 x 215 x 220	Yes	13-15-20	RH ¾" – RH ¾"		
RCF4025S	400 x 215 x 220	Yes	13-15-20	PE25 – PE25		
RCF4032S	400 x 215 x 220	Yes	13-15-20	PE32 – PE32		

- ⚙ Optional water meter (not included)
- ⚙

## WATER METER BOX - HDPE [ DN13 - DN15 - DN20 ] RADIO SYSTEM COMPATIBLE

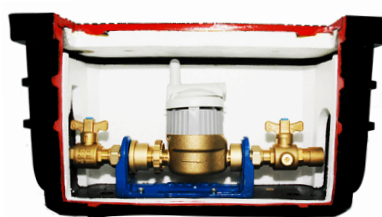


- ⚙ Meter box - HDPE reinforced with fiberglass
- ⚙ Cover made of high-strength composite according to UNE-EN B-125
- ⚙ Complete internal insulation made of expanded polystyrene
- ⚙ Connections: ¾" – 1" – PE25 – PE32
- ⚙ Straight inlet and outlet ball valves - Brass CW617N. Manufactured according to UNE-EN19804
- ⚙ With anti-fraud system, "check" none-return system, support and expansion set for easy installation of any meter: DN13 – DN15 – DN20. Radio system compatible

CODE	MEASURES	ISULATION	METER SIZE	CONNECTIONS	PRICE	DATA SHEET
RCF4022	400 x 215 x 285	Yes	Empty	Empty		
RCF4022S1	400 x 215 x 285	Yes	13-15-20	RH ¾" – RH ¾"		
RCF4022S	400 x 215 x 285	Yes	13-15-20	PE25 – PE25		
RCF4022S2	400 x 215 x 285	Yes	13-15-20	PE32 – PE32		

- ⚙ Optional water meter (not included)

## WATER METER BOX - HDPE [ DN13 - DN15 - DN20 ] – RADIO SYSTEM COMPATIBLE - VOLUMETRIC



Meters with radio module compatible



Suitable for volumetric meters



Certificado para AGUA POTABLE




Anti-fraud system



Non return system

- ⌚ Meter box - HDPE reinforced with fiberglass
- ⌚ Cover made of high-strength composite according to UNE-EN B-125
- ⌚ Complete internal insulation made of expanded polystyrene
- ⌚ Connections: ¾" – 1" – PE25 – PE32
- ⌚ Straight inlet and outlet ball valves - Brass CW617N. Manufactured according to UNE-EN19804
- ⌚ With anti-fraud system, "check" none-return system, support and expansion set for easy installation of any meter: DN13 – DN15 – DN20. Radio system compatible – Volumetric water meters

CODE	MEASURES	ISULATION	METER SIZE	CENNECTIONS	PRICE	DATE SHEET
RCF4824	480 x 255 x 260	Yes	Empty	Empty		
RCF4824S1	480 x 255 x 260	Yes	13-15-20	RH ¾" – RH ¾"		
RCF4824S	480 x 255 x 260	Yes	13-15-20	PE25 – PE25		
RCF4824S2	480 x 255 x 260	Yes	13-15-20	PE32 – PE32		
RCF4824S3	480 x 255 x 260	Yes	13-15-20	RM 1" – RM 1"		
RCF4824C190	480 x 255 x 260	Yes	20-190mm	RH ¾" – R ¾"		

- ⌚ Optional water meter (not included)

## WATER METER BOX - HDPE – FOR TWO WATER METERS [ DN13 – DN15 – DN20 ]



Anti-fraud system



Non return system




Meters with radio module compatible



Certificado para AGUA POTABLE

- ⌚ Meter box - HDPE reinforced with fiberglass
- ⌚ Cover made of high-strength composite according to UNE-EN B-125
- ⌚ Complete internal insulation made of expanded polystyrene
- ⌚ Connections: ¾" – PE25
- ⌚ Straight ball valve -Brass: CW617N. Manufactured according to UNE-EN19804
- ⌚ With anti-fraud system, "check" none-return system, support and expansion set for easy installation of any meter: DN13 – DN15 – DN20. Radio system compatible

CODE	MEASURES	ISULATION	METER SIZE	CONNECTIONS	PRICE	DATA SHEET
RCF4824D1	480 x 255 x 260	Yes	13-15-20	RH ¾" – RH ¾"		
RCF4824D	480 x 255 x 260	Yes	13-15-20	PE25 – PE25		
RCF4824D2	480 x 255 x 260	Yes	13-15-20	PE32 – PE32		

- ⌚ Optional water meter (not included)

## WATER METER BOX - HDPE [ DN25 – DN30 ]




Certificado para  
AGUA POTABLE



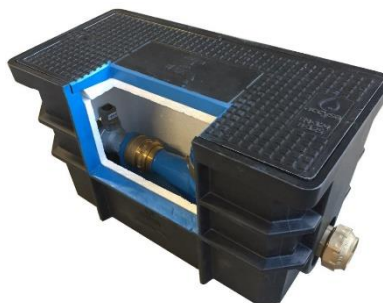
Non return  
system

- ⌚ Meter box - HDPE reinforced with fiberglass
- ⌚ Cover made of high-strength composite according to UNE-EN B-125
- ⌚ Complete internal insulation made of expanded polystyrene
- ⌚ Connections: 1 1/4" – PE40
- ⌚ Straight inlet valve – square nut 30x30
- ⌚ With anti-return system, support and expansion set. Easy installation of any meter - DN25-DN30

CODE	MEASURES	ISULATION	METER SIZE	CONNECTIONS	PRICE	DATA SHEET
RCF4824	480 x 255 x 260	Yes	Empty	Empty		
RCF5422M1	480 x 255 x 260	Yes	25-30	R 1 1/4" – R 1 1/4"		
RCF5422M2	480 x 255 x 260	Yes	25-30	PE40 – PE40		

- ⌚ Optional water meter (not included)

## WATER METER BOX - HDPE [ DN25 -DN30 - DN40 – DN50 ] – RADIO SYSTEM COMPATIBLE



Certificado para  
AGUA POTABLE



Non return  
system




Lightweight design,  
complies with INSHT  
guidelines



Meters with radio  
module compatible

- ⌚ Meter box - HDPE reinforced with fiberglass
- ⌚ Cover made of high-strength composite according to UNE-EN B-125
- ⌚ Complete internal insulation made of expanded polystyrene
- ⌚ Lightweight design following the recommendations of the INSHT
- ⌚ Connections: 1 1/2" – PE50 – 2" – PE50
- ⌚ Straight inlet valve – square nut 30x30
- ⌚ With anti-return system, support and expansion set
- ⌚ Easy installation of any meter: DN25 – DN30 – DN40 – DN50. Radio system compatible

CODE	MEASURES	ISULATION	METER SIZE	NONE-RETURN	CONNECTIONS	PRICE	DATA SHEET
RCF5422	582 x 295 x 337	Yes	Empty	Empty	Empty		
RCF5422M1VR	582 x 295 x 337	Yes	25-30	Yes	R 1 1/4" – R 1 1/4"		
RCF5422M2VR	582 x 295 x 337	Yes	25-30	Yes	PE40 – PE40		
RCF5430M1	582 x 295 x 337	Yes	40	Yes	R 1 1/2" – R 1 1/2"		
RCF5430M2	582 x 295 x 337	Yes	40	Yes	PE50 – PE50		
RCF5430M4	582 x 295 x 337	Yes	50	No	R 2" – R 2"		
RCF5430M5	582 x 295 x 337	Yes	50	No	PE63 – PE63		

- ⌚ Optional water meter (not included)

### SURFACE BOX – IRRIGATION HYDRANT




Non return  
system



With inlet valve  
With expansion set

- ⦿ Surface box with irrigation hydrant set DN40 - HDPE fibreglass reinforced:
  - Inlet valve 1-1/4" – square nut
  - Support with expansion set for easy assembly, maintenance or disassembly of the DN32 meter without the need to dismantle accessories or perform construction work
  - Check valve
  - Opening valve 1-1/4" with handwheel and connector BCN45 or custom outlet
- ⦿ Cover made of high-strength composite according to UNE-EN B-125
- ⦿ Complete internal insulation made of expanded polystyrene
- ⦿ Lightweight design following the recommendations of the INSHT

CODE	MEASURES	INLET VALVE	DISMANTLING REEL	METER SIZE	CONNECTIONS	PRICE	DATA SHEET
RCF5422-BCR-1	582 x 295 x 337	Yes	Yes	DN25/DN32	R.H. 1-1/4" - BCN45		
RCF5422-BCR-2	582 x 295 x 337	Yes	Yes	DN25/DN32	PE40 - BCN45		

- ⦿ Optional water meter (not included)

### WATER METER BOX - HDPE – FOR WOLTMANN DN50



Non return system



Lightweight design,  
complies with INSHT  
guidelines




Certificado para  
AGUA POTABLE



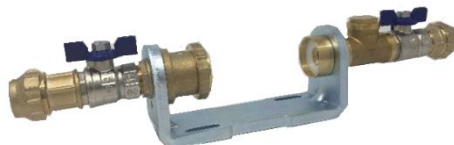
Easy mounting of the meter  
on the outside, practical  
adjustment with expansion set

- ⦿ Water meter box with expansion set prepared for installation of Woltmann DN50 meter. With the necessary accessories to guarantee the correct supply, assembly and disassembly of the meter:
  - 2" Inlet valve – square nut
  - Expansion set with adapter flange for easy mounting, maintenance or dismounting of DN50 meter
- ⦿ Cover made of high-strength composite according to UNE-EN B-125
- ⦿ Complete internal insulation made of expanded polystyrene
- ⦿ Lightweight design following the recommendations of the INSHT

CODE	MEASURES	INLET VALVE	DISMANTLING REEL	METER SIZE	CONNECTIONS	PRICE	DATA SHEET
RCF5422-W1	582 x 295 x 337	Yes	Yes	WOLTMANN DN50	R.H. 2"		
RCF5422-W2	582 x 295 x 337	Yes	Yes	WOLTMANN DN50	PE63		

- ⦿ Optional water meter (not included)


## WATER METER BOX – CANAL ISABEL II APPROVED



Non return system



- ⦿ Water meter box - fibreglass reinforced HDPE, with cast iron cover
  - According to UNE-EN124 B-125
- ⦿ Complete internal insulation made of expanded polystyrene
- ⦿ Assembly:
  - Inlet and outlet fitting for PE-25 pipes connection
  - Inlet and outlet 3/4" ball valve
  - Expansion set with bracket, outlet support and retainer for easy counter mounting
  - Check "Tee"

CODE	MEASURES	ISULATION	METER SIZE	CONNECTIONS	PRICE	DATA SHEET
RCF4824-1	480 x 240 x 255	Yes	DN15 – L115	PE-25		
RCF4824-2	480 x 240 x 255	Yes	DN20 – L190	PE-25		

## BRIDGE TUBE - PVC



- ⦿ Bridge tube – Meter free adaptor
- ⦿ Manufactured in PVC
- Length 115mm

CODE	DESCRIPTION	METER CONNECTOR	PRICE
TUB-PUE-34	Bridge tube PVC	3/4" - 3/4"	
TUB-PUE-78	Bridge tube PVC	7/8" - 3/4"	
TUB-PUE-1	Bridge tube PVC	1" - 1"	

SURFACE BOX - COMPOSITE




 Vandal-proof cover

 High resistance cover

 Easy access



- Surface box designed to access valves for actuation
- Multi-diameter system allows perfect fitment of 90, 110 or 125mm guide tubes
- Made of high resistance composite. Cover certified: UNE EN124 - B-125
- Special material resistant to oxidation and environmental factors. Stainless steel hinge and screws
- Vandal-proof cover with 180º opening
- Customizable inscriptions on the cover on demand

CODE	MEASURES	TUBE CONNECTION	INSCRIPTION	PRICE	DATA SHEET
BLLAP02	190 x 190 x 190	90-110-125mm	AP		

PERFECT FIT System: MULTI-DIÁMETRO ®



DN-125



DN-110




DN-90

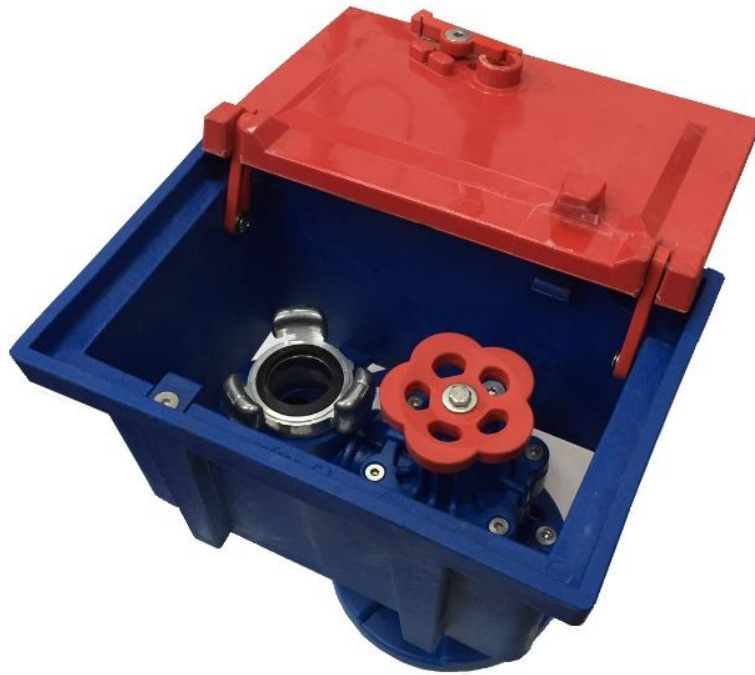
## ACCES COVERS – COMPOSITE



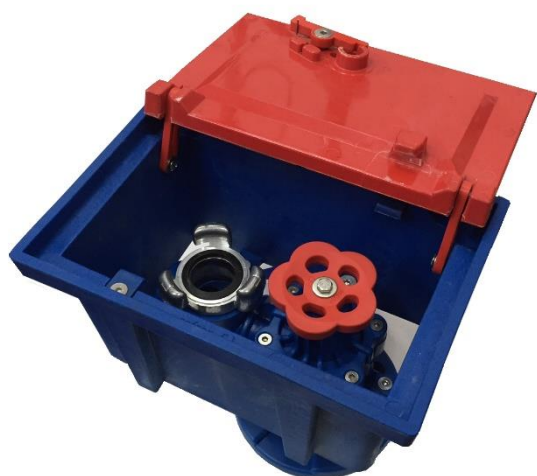
- 🔗 Cover made of high resistance composite, for the protection of diverse mechanisms:
  - Water systems, shutoff valves, electrical instalations, gas, lighting, telephone, etc.
- 🔗 COMPOSITE frame.
- 🔗 Anti-slip surface
- 🔗 High environmental and corrosion resistance
- 🔗 Noise reduction
- 🔗 Disincentive to theft
- 🔗 COMPOSITE latch closure
- 🔗 Customised lettering possible on request
- 🔗 Light and easy to install
- 🔗 Easy opening

CODE	MEASURES	LOGO	LOCK	FRAME	PRICE	DATA SHEET
TPR2516C	250 x 160	WATER TAP	Yes	Yes		
TPR2516AHC	250 x 160	AGUAS DE HUELVA	Yes	Yes		
TPR2828C	280 x 280	WATER TAP	Yes	Yes		
TPR2828AHC	280 x 280	AGUAS DE HUELVA	Yes	Yes		

# IRRIGATION HYDRANTS




## IRRIGATION HYDRANT – COMPOSITE - DN-40

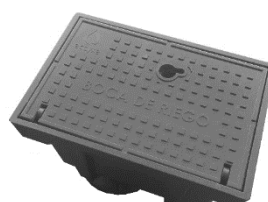


Vandal-proof cover

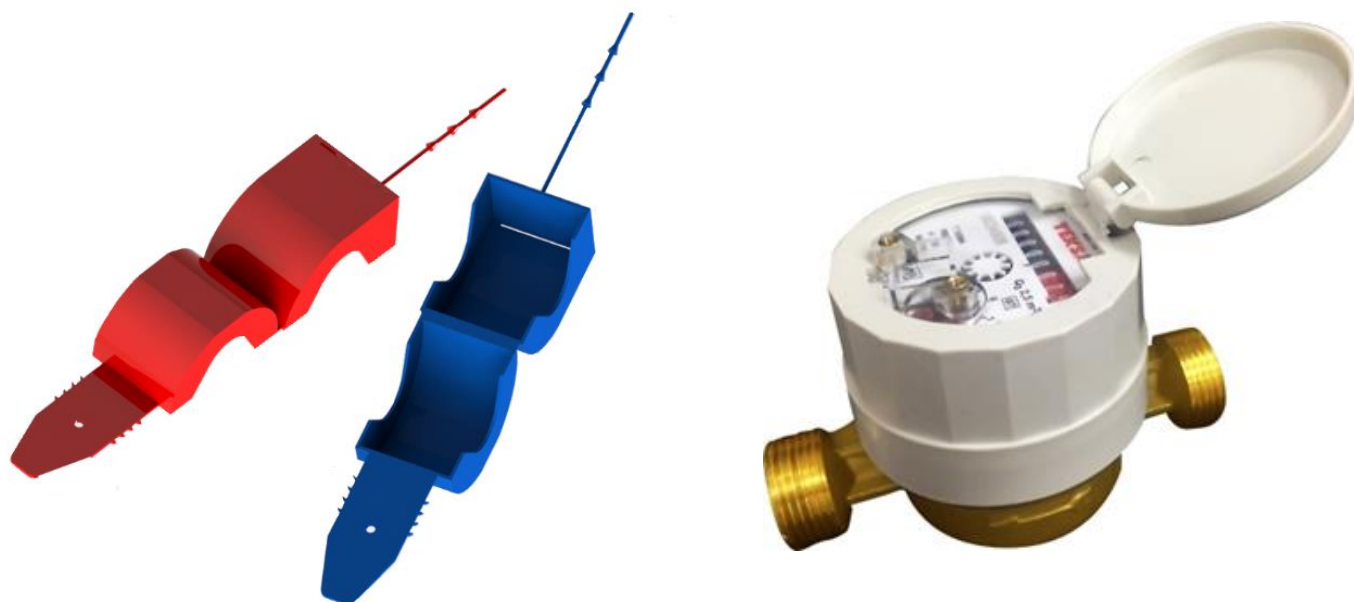


- ⌚ Irrigation hydrant with surface box, composite made. Inlet flange connection DN40-PN16, 1 ½" H thread
- ⌚ Composite cover with high environmental and corrosion resistance, vandal-proof, 180º opening
  - Non-slip surface
  - Noise reduction
- ⌚ Anti-theft material
- ⌚ Lightweight and easy to install
- ⌚ Two outlets options: front - top
- ⌚ INOX 316L stainless steel shaft, stainless steel screws, CW617N brass guide bushings
- ⌚ Standard outlet fitting type BCN 45mm, other fittings can be customized on request
- ⌚ Inscription on cover: "Boca de Riego", other customizable options on request
- ⌚ Patented product

CODE	DN	THREAD	OUTLET CONNECTOR	ACTUATION	COVER COLOUR	PRICE	DATA SHEET
BCR01C	40	H 1 ½"	BCN 45mm	Hand wheel	Red		
BCR07C	40	H 1 ½"	BCN 45mm	Square	Blue		
BCR05C	40	H 1 ½"	Soria	Handwheel	Red		
BCR09C	40	H 1 ½"	Salamanca	Square	blue		
BCR24C	40	H 1 ½"	Ayto. BCN thread	Square	black		
BCRXXC	40	H 1 ½"	Custom thread	Handwheel / Square	Red / Blue		




# WATER METER METER SEALS



### SINGLE JET WATER METER – B CLASS – [ DN13 -DN15 – DN20 ]




 Suitable for remote reading system

**R80** MID Standard




- ⌚ Single Jet water meter
- ⌚ Resistant to strong external magnetic field
- ⌚ Accuracy R80, Metrological Class B
- ⌚ Manufactured in accordance with standards: ISO4064, BS 5728
- ⌚ Working pressure 16 bar
- ⌚ Plastic lid, optionally available on request

CODE	DN	THREAD	LENGTH	PRICE	DATA SHEET
CAFDN13	13	7/8" – ¾"	115 mm		
CAFDN15	15	¾" – ¾"	115 mm		
CAFDN20	20	1" – 1"	115 mm		
CAF-EMIS	Pulse transmitter				


### MULTI JET WATER METER - B CLASS - [ DN25 – DN30 – DN40 – DN50 ]



 Suitable for remote reading system

**R100** MID Standard


- ⌚ Multi Jet water meter
- ⌚ Resistant to strong external magnetic field
- ⌚ Accuracy R80, Metrological Class B
- ⌚ Manufactured in accordance with standards: ISO4064, BS 5728
- ⌚ Working pressure 16 bar
- ⌚ Plastic lid, optionally available on request

CODE	DN	NUT THREAD	LENGTH	PRICE	DATA SHEET
CAFDN25	25	1 1/4" – 1 1/4"	260mm		
CAFDN30	30	1 1/2" – 1 1/2"	260mm		
CAFDN40	40	2" – 2"	300mm		
CAFDN50	50	2 1/2" – 2 1/2"	300mm		
CAF-EMIS-R	Pulse transmitter				

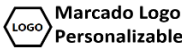
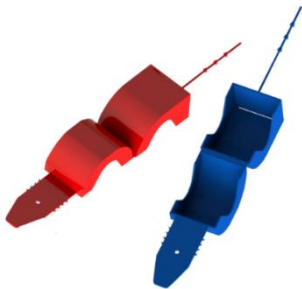
## CONNECTOR FOR WATER METER

- 🔧 Connector made of Brass CW617N
- 🔧 Nut assembled on cone
- 🔧 Including sealing ring




CODE	MALE CONE THREAD	NUT THREAD	PRICE	DATA SHEET
6RES01	3/4"	3/4"		
6RES02	3/4"	7/8"		
6RES03	3/4"	1"		
6RES04	1/2"	3/4"		
6RES05	1/2"	7/8"		
6RES06	1"	DN25 (1¼")		
6RES07	1 ¼"	DN30 (1½")		
6RES08	1 ½"	DN40 (2")		
6RES09	2"	DN50 (2½")		

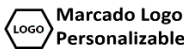
“CLAMP” WATER METER SEAL – DN13 / DN15 / DN20




- Seal for fastening water meters nuts: DN13, DN15, DN20 with the same seal
- Manufactured in one piece plastic material. Easy installation
- Single-use seal with double security system, adjustable insert + pull tie to prevent tampering
- Customizable logo on request

CODE	COLOUR	UNITS PER BOX	PRICE	DATA SHEET
PCP001	Blue	500		
PCP002	Red	500		

ADJUSTABLE FLAG-TYPE SEAL



- Seal for fastening water meters nuts
- Made of PP / Nylon with large surface for number / logo display
- Diameter: 1,6mm
- Consecutive numbering, BARCODE and/or logo
- Customizable
- Strip length: 215mm


CODE	COLOUR	UNITS PER BOX	PRICE	DATA SHEET
PRC03	Blue	1.000		

## BUTTERFLY TYPE SEAL



LOGO Mercado Logo  
Personalizable


- ⚡ Ideal as a substitute of lead
- ⚡ Manufactured in transparent polycarbonate
- ⚡ Insert made of blue ABS
- ⚡ Customization possible upon request
- ⚡ Wire not included

CODE	COLOUR	UNITS PER BOX	PRICE	DATA SHEET
PRC01	Blue	1.000		

## PLASTIC-COATED WIRE SEAL



- ⚡ Non-conductive metal wire
- ⚡ Coated with self-extinguishing material
- ⚡ Wire diameter: 1mm

CODE	COLOUR	METERS PER ROLL	PRICE	DATA SHEET
PRC02	Blue	400		

# WATER METER VALVES

## COMPOSITE



### ANGLE VALVE – DN15 – [ WATER METER INLET ] – ANTI-FRAUD – LOOSE NUT



- ⌚ Made of high-performance thermoplastic composite, reinforced with fiberglass
- ⌚ Lead-free and 100% corrosion-resistant materials
- ⌚ Minimal pressure drop and double cable gland with teflon seals
- ⌚ Test pressure: 25 bar. Working pressure: 16 bar
- ⌚ Design according to UNE-EN19804 and certified for USE IN DRINKING WATER NETWORKS

CODE	DN	METER CONNECTIONS	PRICE	DATA SHEET
VABDN1530C	15	Loose nut 3/4"		
VABDN1540C	15	Loose nut 7/8"		
VABDN1550C	15	Loose nut 1"		

### ANGLE VALVE – DN15 – [ WATER METER OUTLET ] – ANTI-FRAUD – LOOSE NUT



- ⌚ Made of high-performance thermoplastic composite, reinforced with fiberglass
- ⌚ Lead-free and 100% corrosion-resistant materials
- ⌚ Minimal pressure drop and double cable gland with teflon seals
- ⌚ Built-in test system (purge) and hydrodynamic non-return system
- ⌚ Test pressure: 25 bar. Working pressure: 16 bar
- ⌚ Design according to UNE-EN19804 and certified for USE IN DRINKING WATER NETWORKS

CODE	DN	METER CONNECTIONS	PRICE	DATA SHEET
VABRDN1530PC	15	Loose nut 3/4"		
VABRDN1540PC	15	Loose nut 7/8"		
VABRDN1550PC	15	Loose nut 1"		

## ANGLE VALVE – DN15 – [ FOR WATER METER MANIFOLD ] - ANTI-FRAUD – LOOSE NUT

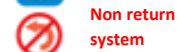


- ⌚ Made of high-performance thermoplastic composite, reinforced with fiberglass
- ⌚ Lead-free and 100% corrosion-resistant materials
- ⌚ Minimal pressure drop
- ⌚ Double cable gland with teflon seals
- ⌚ Collector flange
- ⌚ Gaskets and mounting screws included
- ⌚ Test pressure: 25 bar. Working pressure: 16 bar
- ⌚ Design according to UNE-EN19804 and certified for USE IN DRINKING WATER NETWORKS

CODE	DN	METER CONNECTIONS	NONE-RETURN	MANIFOLD CONNECTION	PRICE	DATA SHEET
VABDN1530BC	15	3/4"	No	Flange		
VABDN1540BC	15	7/8"	No	Flange		
VABDN1550BC	15	1"	No	Flange		

CODE	DESCRIPTION	MANIFOLD CONNECTION	PRICE	DATA SHEET
KBRI-VAL-BAT-C	Manifold Kit +Seals +Screws	Flange		

## ANGLE VALVE KIT – DN15 – [ WATER METER INLET – OUTLET ]



- ⌚ Made of high-performance thermoplastic composite, reinforced with fiberglass
- ⌚ Lead-free and 100% corrosion-resistant materials
- ⌚ Minimal pressure drop and double cable gland with teflon seals
- ⌚ Hydrodynamic non-return system
- ⌚ Test pressure: 25 bar. Working pressure: 16 bar
- ⌚ Design according to UNE-EN19804 and certified for USE IN DRINKING WATER NETWORKS
- ⌚ Water meter not included

CODE	DN	METER CONNECTIONS	PRICE	DATA SHEET
KBATDN1530C	15	Loose nut 3/4"		
KBATDN1540C	15	Loose nut 7/8"		
KBATDN1550C	15	Loose nut 1"		

### ANGLE VALVE – DN20 – [ WATER METER INLET ] – ANTI-FRAUD



- ⚙ Made of high-performance thermoplastic composite, reinforced with fiberglass
- ⚙ Lead-free and 100% corrosion-resistant materials
- ⚙ With L/R reverse thread fitting
- ⚙ Minimal pressure drop and double cable gland with teflon seals
- ⚙ Test pressure: 25 bar. Working pressure: 16 bar
- ⚙ Design according to UNE-EN19804 and certified for USE IN DRINKING WATER NETWORKS

CODE	DN	METER CONNECTIONS	PIPE CONNECTIONS	PRICE	DATA SHEET
VABDN2030C	20	3/4"	Male Thread 3/4"		
VABDN2040C	20	7/8"	Male Thread 3/4"		
VABDN2050C	20	1"	Male Thread 3/4"		
CODE	DN	METER CONNECTIONS	PIPE CONNECTIONS	PRICE	DATA SHEET
FVABDN2030C	20	Without connector	Male Thread 3/4"		

### ANGLE VALVE – DN20 – [ WATER METER INLET ] – ANTI-FRAUD – LOOSE NUT



- ⚙ Made of high-performance thermoplastic composite, reinforced with fiberglass
- ⚙ Lead-free and 100% corrosion-resistant materials
- ⚙ Minimal pressure drop and double cable gland with teflon seals
- ⚙ Test pressure: 25 bar. Working pressure: 16 bar
- ⚙ Design according to UNE-EN19804 and certified for USE IN DRINKING WATER NETWORKS

CODE	DN	METER CONNECTIONS	PIPE CONNECTIONS	PRICE	DATA SHEET
VABDN2030TLC	20	Loose nut 3/4"	3/4"		
VABDN2040TLC	20	Loose nut 7/8"	3/4"		
VABDN2050TLC	20	Loose nut 1"	3/4"		

## ANGLE VALVE – DN20 – [ WATER METER OUTLET ] – NONE-RETURN



- ⌚ Made of high-performance thermoplastic composite, reinforced with fiberglass
- ⌚ Lead-free and 100% corrosion-resistant materials
- ⌚ With L/R reverse thread fitting
- ⌚ Minimal pressure drop and double cable gland with teflon seals
- ⌚ Built-in test system (purge) and hydrodynamic non-return system
- ⌚ Test pressure: 25 bar. Working pressure: 16 bar
- ⌚ Design according to UNE-EN19804 and certified for USE IN DRINKING WATER NETWORKS

CODE	DN	METER CONNECTIONS	PIPE CONNECTIONS	PRICE	DATA SHEET
VABRDN2030PC	20	3/4"	Male Thread 3/4"		
VABRDN2040PC	20	7/8"	Male Thread 3/4"		
VABRDN2050PC	20	1"	Male Thread 3/4"		

CODE	DN	METER CONNECTIONS	PIPE CONNECTIONS	PRICE	DATA SHEET
FVABRDN2030PC	20	Without connector	Male Thread 3/4"		

## ANGLE VALVE – DN20 – [ WATER METER OTLET ] – NONE-RETURN – LOOSE NUT



- ⌚ Made of high-performance thermoplastic composite, reinforced with fiberglass
- ⌚ Lead-free and 100% corrosion-resistant materials
- ⌚ Minimal pressure drop and double cable gland with teflon seals
- ⌚ Built-in test system (purge) and hydrodynamic non-return system
- ⌚ Test pressure: 25 bar. Working pressure: 16 bar
- ⌚ Design according to UNE-EN19804 and certified for USE IN DRINKING WATER NETWORKS

CODE	DN	METER CONNECTIONS	PIPE CONNECTIONS	PRICE	DATA SHEET
VABRDN2030PTLC	20	Loose nut 3/4"	3/4"		
VABRDN2040PTLC	20	Loose nut 7/8"	3/4"		
VABRDN2050PTLC	20	Loose nut 1"	3/4"		

### ANGLE VALVE – DN20 – [ FOR WATER METER MANIFOLD ] - ANTI-FRAUD



Certificado para  
AGUA POTABLE



Anti-fraud  
system



- ⚡ Made of high-performance thermoplastic composite, reinforced with fiberglass
- ⚡ Lead-free and 100% corrosion-resistant materials
- ⚡ With L/R reverse thread fitting
- ⚡ Minimal pressure drop
- ⚡ Double cable gland with teflon seals
- ⚡ Collector flange
- ⚡ Gaskets and mounting screws included
- ⚡ Test pressure: 25 bar. Working pressure: 16 bar
- ⚡ Design according to UNE-EN19804 and certified for USE IN DRINKING WATER NETWORKS

CODE	DN	METER CONNECTIONS	NONE-RETURN	MANIFOLD CONNECTION	PRICE	DATA SHEET
VABDN2030BC	20	3/4"	No	Flange		
VABDN2040BC	20	7/8"	No	Flange		
VABDN2050BC	20	1"	No	Flange		

CODE	DESCRIPTION	MANIFOLD CONNECTION	PRICE	DATA SHEET
KBRI-VAL-BAT-C	Manifold Kit +Seals +Screws	Flange		

### ANGLE VALVE – DN20 – [ FOR WATER METER MANIFOLD ] - ANTI-FRAUD – LOOSE NUT



Certificado para  
AGUA POTABLE



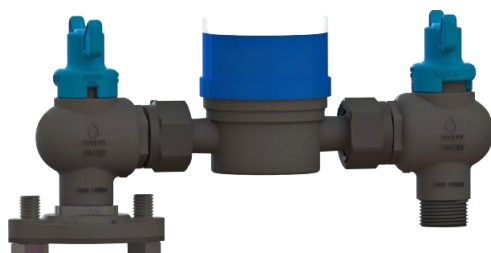
Anti-fraud  
system



- ⚡ Made of high-performance thermoplastic composite, reinforced with fiberglass
- ⚡ Lead-free and 100% corrosion-resistant materials
- ⚡ Minimal pressure drop
- ⚡ Double cable gland with teflon seals
- ⚡ Collector flange
- ⚡ Gaskets and mounting screws included
- ⚡ Test pressure: 25 bar. Working pressure: 16 bar
- ⚡ Design according to UNE-EN19804 and certified for USE IN DRINKING WATER NETWORKS

CODE	DN	METER CONNECTIONS	NONE-RETURN	MANIFOLD CONNECTION	PRICE	DATA SHEET
VABDN2030BTLC	20	3/4"	No	Flange		
VABDN2040BTLC	20	7/8"	No	Flange		
VABDN2050BTLC	20	1"	No	Flange		

## ANGLE VALVE KIT – DN20 – [ WATER METER INLET – OUTLET ]



- ⌚ Made of high-performance thermoplastic composite, reinforced with fiberglass
- ⌚ Lead-free and 100% corrosion-resistant materials
- ⌚ With L/R reverse thread fitting
- ⌚ Minimal pressure drop and double cable gland with teflon seals
- ⌚ Hydrodynamic non-return system
- ⌚ Test pressure: 25 bar. Working pressure: 16 bar
- ⌚ Design according to UNE-EN19804 and certified for USE IN DRINKING WATER NETWORKS
- ⌚ Water meter not included

CODE	DN	METER CONNECTIONS	PIPE CONNECTIONS	PRICE	DATA SHEET
KBATDN2030C	20	¾"	Male Thread ¾"		
KBATDN2040C	20	7/8"	Male Thread ¾"		
KBATDN2050C	20	1"	Male Thread ¾"		
KBATDN2031C	20	1"	Male Thread ¾"		
KBATDN2041C	20	1"	Male Thread ¾"		
KBATDN2051C	20	1"	Male Thread ¾"		

## ANGLE VALVE KIT – DN20 – [ WATER METER INLET – OUTLET ] – LOOSE NUT



- ⌚ Made of high-performance thermoplastic composite, reinforced with fiberglass
- ⌚ Lead-free and 100% corrosion-resistant materials
- ⌚ Minimal pressure drop and double cable gland with teflon seals
- ⌚ Hydrodynamic non-return system
- ⌚ Test pressure: 25 bar. Working pressure: 16 bar
- ⌚ Design according to UNE-EN19804 and certified for USE IN DRINKING WATER NETWORKS
- ⌚ Water meter not included

CODE	DN	METER CONNECTIONS	PIPE CONNECTIONS	PRICE	DATA SHEET
KBATDN2030TLC	20	¾"	Loose nut ¾"		
KBATDN2040TLC	20	7/8"	Loose nut ¾"		
KBATDN2050TLC	20	1"	Loose nut ¾"		
KBATDN2031TLC	20	¾"	Loose nut 1"		
KBATDN2041TLC	20	7/8"	Loose nut 1"		
KBATDN2051TLC	20	1"	Loose nut 1"		

### STRAIGHT VALVE – DN20 – [ WATER METER INLET ] – ANTI-FRAUD



- ⌚ Made of high-performance thermoplastic composite, reinforced with fiberglass
- ⌚ Lead-free and 100% corrosion-resistant materials
- ⌚ With L/R reverse thread fitting
- ⌚ Minimal pressure drop and double cable gland with teflon seals
- ⌚ Test pressure: 25 bar. Working pressure: 16 bar
- ⌚ Design according to UNE-EN19804 and certified for USE IN DRINKING WATER NETWORKS

CODE	DN	METER CONNECTIONS	PIPE CONNECTIONS	PRICE	DATA SHEET
VBDN2030C	20	¾"	Male Thread ¾"		
VBDN2040C	20	7/8"	Male Thread ¾"		
VBDN2050C	20	1"	Male Thread ¾"		

CODE	DN	METER CONNECTIONS	PIPE CONNECTIONS	PRICE	DATA SHEET
FVBDN2030C	20	Without connector	Male Thread ¾"		

### STRAIGHT VALVE – DN20 – [ WATER METER INLET ] – ANTI-FRAUD - LOOSE NUT



- ⌚ Made of high-performance thermoplastic composite, reinforced with fiberglass
- ⌚ Lead-free and 100% corrosion-resistant materials
- ⌚ Minimal pressure drop and double cable gland with teflon seals
- ⌚ Test pressure: 25 bar. Working pressure: 16 bar
- ⌚ Design according to UNE-EN19804 and certified for USE IN DRINKING WATER NETWORKS

CODE	DN	METER CONNECTIONS	PRICE	DATA SHEET
VBDN2030TLC	20	Loose nut ¾"		
VBDN2040TLC	20	Loose nut 7/8"		
VBDN2050TLC	20	Loose nut 1"		

## STRAIGHT VALVE – DN20 – [ WATER METER OUTLET ] – NONE-RETURN



- ⌚ Made of high-performance thermoplastic composite, reinforced with fiberglass
- ⌚ Lead-free and 100% corrosion-resistant materials
- ⌚ With L/R reverse thread fitting
- ⌚ Minimal pressure drop and double cable gland with teflon seals
- ⌚ Hydrodynamic non-return system
- ⌚ Test pressure: 25 bar. Working pressure: 16 bar
- ⌚ Design according to UNE-EN19804 and certified for USE IN DRINKING WATER NETWORKS

CODE	DN	METER CONNECTIONS	PIPE CONNECTIONS	PRICE	DATA SHEET
VBRDN2030C	20	¾"	Male Thread ¾"		
VBRDN2040C	20	7/8"	Male Thread ¾"		
VBRDN2050C	20	1"	Male Thread ¾"		

CODE	DN	METER CONNECTIONS	PIPE CONNECTIONS	PRICE	DATA SHEET
FVBRDN2030C	20	Without connector	Male Thread ¾"		

## STRAIGHT VALVE – DN20 – [ WATER METER OUTLET ] – NONE-RETURN – LOOSE NUT



- ⌚ Made of high-performance thermoplastic composite, reinforced with fiberglass
- ⌚ Lead-free and 100% corrosion-resistant materials
- ⌚ Minimal pressure drop and double cable gland with teflon seals
- ⌚ Test pressure: 25 bar. Working pressure: 16 bar
- ⌚ Design according to UNE-EN19804 and certified for USE IN DRINKING WATER NETWORKS

CODE	DN	METER CONNECTIONS	PRICE	DATA SHEET
VBRDN2030TLC	20	Loose nut ¾"		
VBRDN2040TLC	20	Loose nut 7/8"		
VBRDN2050TLC	20	Loose nut 1"		

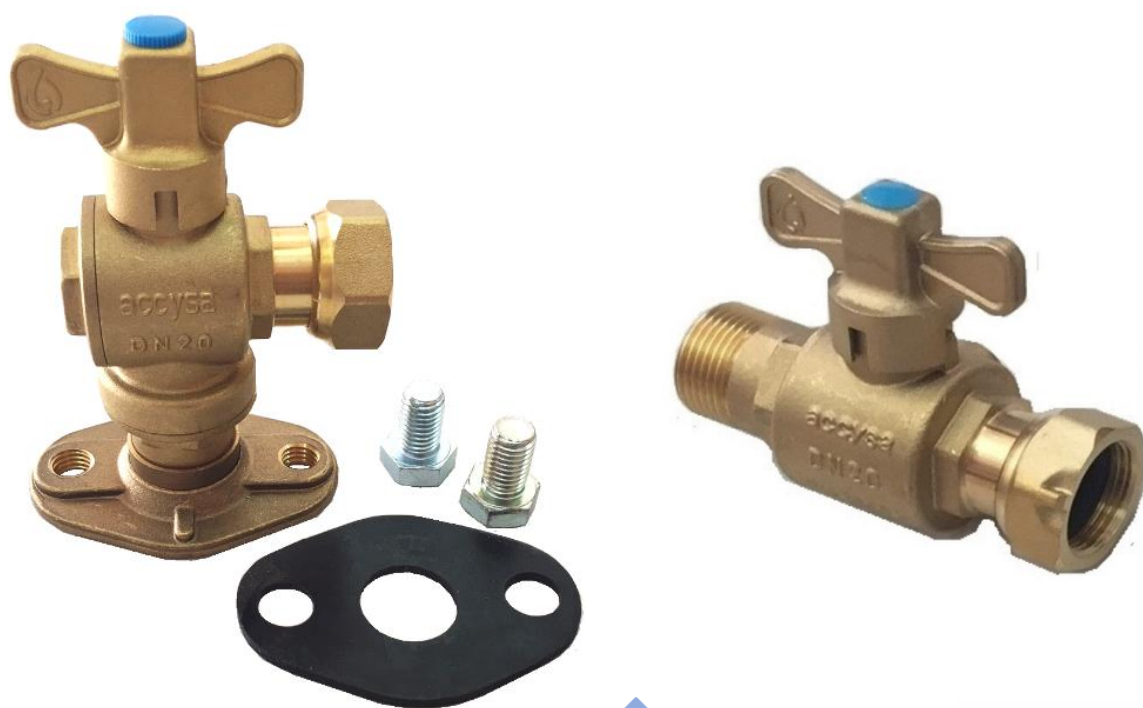
## L/R REVERSE THREAD NUT



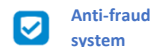
CODE	DN	METER CONNECTIONS	VALVE CONNECTIONS	PRICE	DATA SHEET
9TE01-C	20	3/4"	¾" Reverse thread		
9TE02-C	20	7/8"	¾" Reverse thread		
9TE03-C	20	1"	¾" Reverse thread		

# WATER METER VALVES


**BRASS**



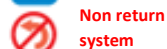
## ANGLE VALVE – DN20 – [ WATER METER INLET ]




- Stamped brass CW617N, according to DIN17660
- Minimal pressure drop and double cable gland with teflon seals
- Test pressure: 25 bar. Working pressure: 16 bar
- Design according to UNE-EN19804 and certified for USE IN DRINKING WATER NETWORKS

CODE	DN	METER CONNECTIONS	PIPE CONNECTION	PRICE	DATA SHEET
VABDN2030P	20	¾"	Male Thread ¾"		
VABDN2032P	20	¾"	PE25		
VABDN2033P	20	¾"	PE32		
VABDN2040P	20	7/8"	Male Thread ¾"		
VABDN2042P	20	7/8"	PE25		
VABDN2043P	20	7/8"	PE32		
VABDN2050P	20	1"	Male Thread ¾"		
VABDN2052P	20	1"	PE25		
VABDN2053P	20	1"	PE32		

## ANGLE VALVE – DN20 – [ WATER METER OUTLET ] – NONE-RETURN



- Stamped brass CW617N, according to DIN17660
- Minimal pressure drop and double cable gland with teflon seals
- Built-in test system (purge) and hydrodynamic non-return system
- Test pressure: 25 bar. Working pressure: 16 bar
- Design according to UNE-EN19804 and certified for USE IN DRINKING WATER NETWORKS

CODE	DN	METER CONNECTIONS	PIPE CONNECTION	PRICE	DATA SHEET
VABRDN2030P	20	¾"	Male Thread ¾"		
VABRDN2032P	20	¾"	PE25		
VABRDN2033P	20	¾"	PE32		
VABRDN2040P	20	7/8"	Male Thread ¾"		
VABRDN2042P	20	7/8"	PE25		
VABRDN2043P	20	7/8"	PE32		
VABRDN2050P	20	1"	Male Thread ¾"		
VABRDN2052P	20	1"	PE25		
VABRDN2053P	20	1"	PE32		


### ANGLE VALVE – DN20 – [ FOR WATER METER MANIFOLD ] – ANTI-FRAUD / NONE-RETURN



 Certificado para  
AGUA POTABLE

 Anti-fraud  
system


- Stamped brass CW617N, according to DIN17660
- Minimal pressure drop and double
- Double cable gland with teflon seals
- Collector flange
- Gaskets and mounting screws included
- Test pressure: 25 bar. Working pressure: 16 bar
- Design according to UNE-EN19804 and certified for USE IN DRINKING WATER NETWORKS

CODE	DN	METER CONNECTIONS	NONE-RETURN	MANIFOLD CONNECTION	PRICE	DATA SHEET
VABDN2030B	20	3/4"	No	Flange		
VABDN2040B	20	7/8"	No	Flange		
VABDN2050B	20	1"	No	Flange		
VABRDN2030B	20	3/4"	Yes	Flange		
VABRDN2040B	20	7/8"	Yes	Flange		
VABRDN2050B	20	1"	Yes	Flange		

### MANIFOLD BLIND FLANGE



- Brass blind flange for manifolds
- EPDM gasket and screws DIN933 - Strength 8.8 M12x20

CODE	DN	UNIT PRICE	DATA SHEET
BR-CIE-BAT	20		

## STRAIGHT VALVE – DN20 – [ WATER METER INLET ]



- Stamped brass CW617N, according to DIN17660
- Minimal pressure drop and double cable gland with teflon seals
- Test pressure: 25 bar. Working pressure: 16 bar
- Design according to UNE-EN19804 and certified for USE IN DRINKING WATER NETWORKS

CODE	DN	METER CONNECTIONS	PIPE CONNECTION	PRICE	DATA SHEET
VBDN2030	20	¾"	Male Thread ¾"		
VBDN2031	20	¾"	Female Thread ¾"		
VBDN2032	20	¾"	PE25		
VBDN2033	20	¾"	PE32		
VBDN2040	20	7/8"	Male Thread ¾"		
VBDN2041	20	7/8"	Female Thread ¾"		
VBDN2042	20	7/8"	PE25		
VBDN2043	20	7/8"	PE32		
VBDN2050	20	1"	Male Thread ¾"		
VBDN2051	20	1"	Female Thread ¾"		
VBDN2052	20	1"	PE25		
VBDN2053	20	1"	PE32		



## STRAIGHT VALVE – DN20 – [ WATER METER OUTLET ] – NONE-RETURN



- Stamped brass CW617N, according to DIN17660
- Minimal pressure drop and double cable gland with teflon seals
- Built-in test system (purge) and hydrodynamic non-return system
- Test pressure: 25 bar. Working pressure: 16 bar
- Design according to UNE-EN19804 and certified for USE IN DRINKING WATER NETWORKS

CODE	DN	METER CONNECTIONS	PIPE CONNECTION	PRICE	DATA SHEET
VBRDN2030	20	¾"	Male Thread ¾"		
VBRDN2031	20	¾"	Female Thread ¾"		
VBRDN2032	20	¾"	PE25		
VBRDN2033	20	¾"	PE32		
VBRDN2040	20	7/8"	Male Thread ¾"		
VBRDN2041	20	7/8"	Female Thread ¾"		
VBRDN2042	20	7/8"	PE25		
VBRDN2043	20	7/8"	PE32		
VBRDN2050	20	1"	Male Thread ¾"		
VBRDN2051	20	1"	Female Thread ¾"		
VBRDN2052	20	1"	PE25		
VBRDN2053	20	1"	PE32		



# BRONZE VALVES



## BRONZE BALL VALVE



- 🔧 Body and square nut made of bronze RG5 UNE-371
- 🔧 Sealing rings in teflon
- 🔧 AISI304 stainless steel screw
- 🔧 Ball and shaft, made of brass CW617N
- 🔧 Working pressure: PN16/PN25

CONNECTION F-F	CODE	CONNECTIONS	PRICE	DATA SHEET
	VBHH001	H ¾" – H ¾"		
	VBHH002	H 1" – H 1"		
	VBHH003	H 1 ¼" – H 1 ¼"		
	VBHH004	H 1 ½" – H 1 ½"		
	VBHH005	H 2" – H 2"		

CONNECTION F-PE	CODE	CONNECTIONS	PRICE
	VBPH001	PE25 – H ¾"	
	VBPH002	PE32 – H 1"	
	VBPH003	PE40 – H 1 ¼"	
	VBPH004	PE50 – H 1 ½"	
	VBPH005	PE63 – H 2"	



CONNECTION PE-PE	CODE	CONNECTIONS	PRICE
	VBPP001	PE25 – PE25	
	VBPP002	PE32 – PE32	
	VBPP003	PE40 – PE40	
	VBPP004	PE50 – PE50	
	VBPP005	PE63 – PE63	


# ACCESSORIES AND SIGNALING



UNDERGROUND WARNING TAPE FOR PIPELINES



- Warning tape for water, gas and electricity pipelines
- Pre-notification of underground installations
- Detectable bands with 0.5mm copper wire for easy detection
- Supplied in 500 meters rolls


CODE	MARKING	DETECTOR WIRE	METERS PER ROLL	TAPE WIDTH	PRICE	DATA SHEET
BSA15	AGUA POTABLE	No	500 m	150 mm		
BSE15	CANAL. ELÉCTRICA	No	500 m	150 mm		

Other designs on request

PIPELINE MARKING MESH



- Signalling mesh for underground water pipelines with indication of DRINKING WATER
- Supplied in 100 metre rolls
- Pre-warning of underground installations with high resistance to UV rays and soil characteristics
- Complies with UNE EN 12613: Warning devices with visual signal for buried pipelines

CODE	LABEL	COLOUR	METERS PER ROLL	TAPE WIDTH	PRICE	DATA SHEET
MSA30	AGUA POTABLE	BLUE	100 m	300 mm		


TELESCOPIC MANOEUVRING KEY



  **SQUARE 30X30  
HANDWHEEL**




- ⚙ Made of steel
- ⚙ Finished with white zinc coating
- ⚙ For square 30x30
- ⚙ Includes opening accessory for valves with handwheel
- ⚙ Telescopic extension up to 2 metres

CODE	CLOSED LENGTH	OPEN LENGTH	LOCKS	PRICE	DATA SHEET
LLMT01	1,20 m	2 m	Square + Handwheel		

INDIVIDUAL METER MANIFOLDS




- ⚙ Manifolds made of carbon steel tube
- ⚙ Manufactured with fastening tabs both for meter boxes or directly on the façade
- ⚙ Manifold inlet connection Male thread 1 1/4"
- ⚙ Different outlets, 3/4" thread, or battery flange
- ⚙ Leak-proof welding

CODE	OUTPUTS	OUTLET CONNECTION	INLET CONNECTION	PRICE	DATA SHEET
CZB2S	2	Female thread 3/4"	Male thread 1 1/4"		
CZB3S	3	Female thread 3/4"	Male thread 1 1/4"		
CZB4S	4	Female thread 3/4"	Male thread 1 1/4"		
CZB2SB	2	Manifold flange	Male thread 1 1/4"		

## LOCTITE THREAD SEALANT



- 💧 Thread sealant recommended for sealing metal and plastic pipes
- 💧 Easy application through the same container that facilitates storage and dosage of the product
- 💧 No curing necessary
- 💧 High resistance
- 💧 Hard to dismantle
- 💧 High viscosity
- 💧 Excellent chemical resistance

CODE	QUANTITY PER CANISTER		PRICE
473086	150 meters	24 u	

## LIQUID THREAD SEALANT




- 💧 High resistance
- 💧 Hard to dismantle
- 💧 High viscosity
- 💧 Excellent chemical resistance

CODE	QUANTITY PER CANISTER	PRICE
SR277	250 ml	

## UNDER PRESSURE DRILLING MACHINE (3/4" a 3")



- Drilling machine for tapping pipes under pressure without the need to empty them
- Constructed of aluminum and steel, with zinc coating for excellent strength. Light weight
- For drilling PVC, PE, cast iron and fiber cement pipes
- Drilling sizes from 3/4" to 3"
- The drilling machine set consists of: saddle adaptor, fixing element for drill shaft, 1/8" purge valve, advance grip, Allen wrench, hole saw cutters for PVC-PE pipes. Suitcase included

CODE	HOLE SAW CUTTERS	PURGE VALVE	PERFORATION MEASURES	PRICE	DATA SHEET
TTCM01	Included	Included	3/4" a 3"		



CODE	DESCRIPTION	PRICE
TTCM02	Crown saw kit for drilling steel and cast iron	

## GENERAL TERMS AND CONDITIONS OF SALE

### 1. SCOPE OF APPLICABILITY

Las Sales made by ACCYSA, the Seller, shall be governed by these General Conditions, except where expressly agreed otherwise between the Seller and the Buyer, which are the particular conditions of the order.

### 2. ORDER PROCESSING

For an order to be considered valid, it must be accepted by the Seller, except in cases where, given the periodic nature of the supply, this requirement has been waived.

### 3. PRICES

Prices do not include VAT or any other taxes, duties or charges, which shall be charged separately and at the appropriate rates.

The prices do not include packaging, transport, freight, charges or insurance unless this has been accepted in the order or there is an agreement in this respect between Seller and Buyer.

Once the order has been accepted by the Seller, the prices shall be considered fixed and not subject to revision, unless a revision to the price has been agreed between the Buyer and the Seller, or there is a delay attributable to the Buyer, or the scope of supply has been modified at the Buyer's request. The Seller is entitled to change the price list without prior notice.

### 4. DELIVERY TERMS AND CONDITIONS

The delivery period is understood to be for the material placed in the conditions indicated in the order. If they are not specified, the material shall be considered to be located in the Seller's dispatch warehouses. The delivery period may be modified when the Buyer has not complied with his payments, or does not deliver the documentation for the execution of the supply on time, or when modifications to the order are requested, or when he has not fulfilled any of the contractual obligations or, lastly, in the event that the delay is caused by causes that cannot be directly attributed to the Seller, such as strikes of the Seller's personnel, such as suppliers, subcontractors, transport or services, sabotage, production stoppages due to breakdowns, failures in the supplies of third parties, transport failures, floods, storms, disturbances, etc.

### 5. INSPECTION AND ACCEPTANCE

Once the delivery has been received, the Buyer has a period of 15 days to verify the contents and check any defects attributable to the Seller. Unless the order has specified proofs of receipt with a specific and agreed duration, after this period of 15 days, no claim for the goods will be admitted and the order will be considered to be accepted, and the guarantee period will start to run from this moment onwards.

### 6. RETURNS AND CLAIMS

In no case will the Seller accept returns of materials without prior agreement with the Buyer and a period of 15 days from receipt of the product is established for the Buyer to notify the Seller in writing of its intention to make a return and its justification, and to agree on the return process. Returns or shipments of the product to the Seller for credit, replacement or repair must always be made carriage paid and in the event that the return is for reasons beyond Seller's control, 15% of the net value of the returned material will be charged as compensation for the costs incurred. Returns of materials that have been used, installed, disassembled, modified or any other manipulation will not be accepted.

### 7. PAYMENT CONDITIONS

The Seller's offer or, in the absence thereof, the Buyer's order accepted by the Seller shall include the terms of payment for the supply. If agreed payment terms exist within the framework of an ongoing business relationship, they shall also be perfectly valid. Payment shall be made on the agreed terms, without any deductions such as non-agreed discounts, charges, taxes, fees or any other deduction.

In the event of late payment, the Buyer shall bear and pay, without demand and from the due date of payment, default interest on the delayed payment, which shall be calculated at the interest rate of EURIBOR for the period of delay plus 4%.

The payment of interest does not release the Buyer from making the remaining payments under the agreed conditions. In the event that the Buyer is in arrears with the agreed payments, the Seller may suspend the delivery, without prejudice to requiring the Buyer to make the payments and additional compensation if claimed, due to expenses arising from the preparation and execution of the order. The Buyer's claim does not entitle him to suspension or deduction of payment deadlines.

### 8. WARRANTY

Unless otherwise stated in the offer or acceptance of the order, Seller warrants the products supplied, against any defects in materials, workmanship or assembly, for a period of one year from the date of receipt.

The warranty consists of the repair or replacement, at the seller's discretion, of the components recognized as defective. The repair or replacement of a defective element generates a new warranty period of one year, only and exclusively of the repaired or replaced component, and does not change the starting date of the warranty period of the rest of the components or assembly. In no case shall the Seller be responsible for repairs carried out by personnel outside its organization, even if original parts and components have been used.

Excluded from the warranty are damages or defects due to wear and tear caused by normal use of the equipment, those originated by inadequate conservation or maintenance, erroneous or negligent storage or handling, abusive use, use of inadequate liquids or gases, inadequate working conditions, defective installations or variations from the adequate working conditions, or any cause not attributable to the Seller.

### 9. BRANDS

Buyer is expressly prohibited from removing in whole or in part, applying new markings, or in any other way altering the markings on the materials supplied, emblems or other distinctive signs appearing affixed in any way to the materials at the time of delivery by Seller.

### 10. JURISDICTION AND COMPETENCE

The questions and discrepancies that may arise between the parties will be resolved amicably, except for those of an economic nature. In the event that it is impossible to reach an amicable agreement, the decision will be submitted to arbitration in the courts and tribunals of the city of Granollers (Barcelona, Spain).



# accysa

Accesorios y Suministros del Agua SL

C/Luxemburgo, nº30 - Pol. Ind. Pla de Llerona - 08520 Les Franqueses del Vallès - Barcelona (SPAIN)  
Tel: +34 93 840 27 36 - [accysa@accysa.com](mailto:accysa@accysa.com) - [//www.accysa.com](http://www.accysa.com)